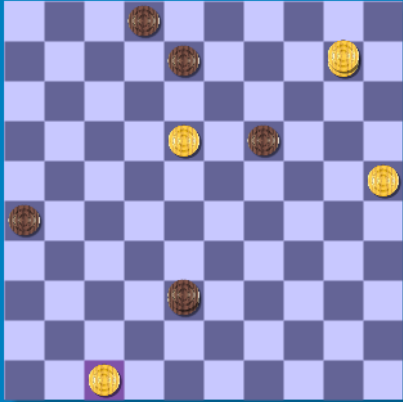
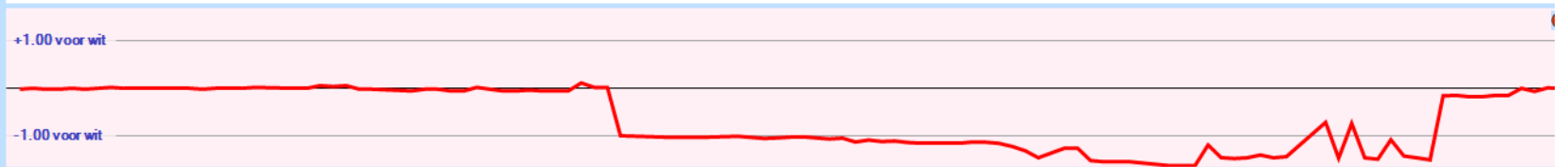


Wit: **Wim van Kasteren**  
 Zwart: **Lambert van Vught**  
 Resultaat: **1-1**  
 Datum: **15-9-2016**  
 Toernooi: **Onderlinge competitie**  
 Plek: **De Huif**

Ronde:



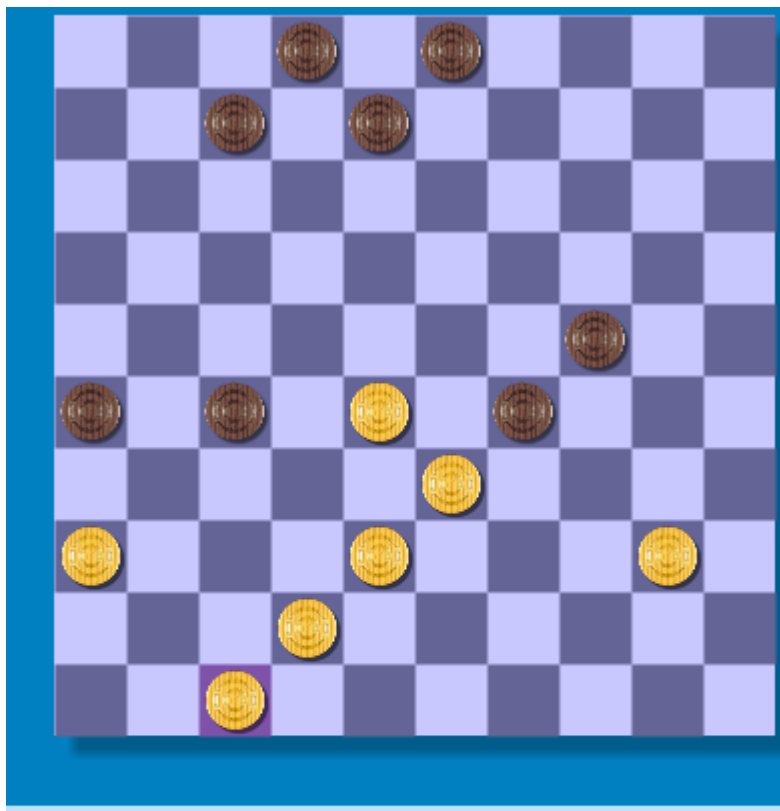
1. 32-28 20-24 2. 37-32 14-20 3. 41-37 10-14 4. 34-30 18-23 5. 31-27 12-18 6. 46-41 7-12 7. 36-31 4-10 8. 41-36 17-21 9. 30-25 21-26 10. 40-34 24-30 11. 35x24 20x29x40 12. 45x34 15-20 13. 33-29 1-7 14. 39-33 10-15 15. 34-30 23x34 16. 30x39 18-23 17. 44-40 20-24 18. 40-35 12-18 19. 27-22 18x27 20. 31x22 7-12 21. 50-44 11-17 22. 22x11 16x7 23. 44-40 6-11 24. 40-34  
 ( 24. 36-31 may be better 14-20 25. 25x14 14-20 26. 37-31 26x37 27. 37-31 -0.06 at 14 ply )  
 ... 24-29 25. 33x24 19x30 26. 28x19x10 5x14 27. 35x24 14-20 28. 25x14 9x20x29x40 29. 39-34 40x29 30. 43-39 13-19 31. 49-44 15-20 32. 44-40 19-24 33. 48-43 24-30 34. 39-33 20-24 35. 43-39 30-35 36. 32-28 35x44 37. 39x50 12-17 38. 37-32 17-21 39. 50-44  
 ( 39. 42-37 may be better 11-16 40. 42-37 11-16 41. 42-37 11-16 42. 42-37 -1.24 at 11 ply )  
 ... 11-16 40. 44-40 21-27 -1.40 at 13 ply  
 ( 7-11 may be better 41. 42-37 7-11 42. 42-37 7-11 43. 42-37 7-11 44. 42-37 -1.46 at 12 ply )  
 41. 32x21 16x27 42. 40-35  
 ( 42. 28-22 may be better 27x18 43. 28-23 8-13 44. 23x12x1 3-9 45. 1x34 8-13 46. 28-23 8-13 47. 28-23 8-13 48. 28-23 7-12 49. 40-35 8-13 50. 28-23 8-13 51. 28-23 8-13 52. 28-23 -2.46 at 16 ply )  
 ... 3-9 43. 28-23 29x18 44. 33-29 24x33 45. 38x29 18-23 46. 29x18 27-32  
 ( 8-13 may be better 47. 35-30 13x22 48. 35-30 2-7 49. 35-30 2-7 50. 35-30 2-7 51. 35-30 2-7 52. 35-30 2-7 53. 35-30 2-7 54. 35-30 2-7 55. 35-30 2-7 56. 35-30 2-7 -2.34 at 14 ply )  
 47. 47-41 7-11 48. 35-30 11-16 49. 30-25  
 ( 49. 41-37 is better 32x41 50. 36x47 32x43 51. 38x27 32x43 52. 38x27 32x43 53. 38x27 32x43 54. 38x27 32x43 55. 38x27 32x43 56. 38x27 32x43 57. 38x27 32x43 58. 38x27 32x43 59. 38x27 -0.45 at 18 ply )  
 ... 9-14 50. 41-37 32x41 51. 36x47 16-21 52. 42-38 21-27 53. 38-33 27-32 54. 33-29 32-38 55. 29-24 38-43 56. 24-20 14-19 57. 20-15 43-49 58. 15-10 49-32  
 ( 49-40 may be better 59. 10-5 49-32 60. 10-5 49-32 61. 10-5 49-32 62. 10-5 49-32 63. 10-5 49-32 64. 10-5 49-32 65. 10-5 49-32 66. 10-5 49-32 67. 10-5 49-32 68. 10-5 49-32 -0.13 at 8 ply ) 59. 10-4  
 ( 59. 18-12 may be better 8x17 60. 18-12 17x8 61. 18-12 8x17 62. 18-12 17x8 63. 18-12 8x17 64. 18-12 17x8 65. 18-12 8x17 66. 18-12 17x8 67. 18-12 8x17 68. 18-12 17x8 69. 18-12 -0.01 at 9 ply )  
 ... 32-38 60. 4-10 0.00 at 9 ply



De 42e zet van wit (geeft remisekansen voor wit)

... 27x18 43. 33-28  
 ( 43. 28-23 8-13 44. 23x12x1 3-9 45. 1x34 8-13 46. 28-23 8-13 47. 28-23 8-13 48. 28-23 7-12 49. 40-35 8-13 50. 28-23 8-13 51. 28-23 8-13 52. 28-23 -2.46 at 16 ply )  
 ... 18-22 44. 28x17 24-30 45. 38-33 29x38 46. 42x33 8-13 47. 47-41 13-19 48. 41-37 7-12 49. 17x8 3x12 50. 33-28 12-18 51. 36-31 2-7 52. 31-27 7-11 53. 28-22 18-23 54. 37-32 19-24 55. 32-28 23x32x21 56. 22-18 11-16 57. 40-35 26-31 58. 18-12 31-36 59. 12-8 30-34 60. 8-3 21-26 61. 3-25 36-41 62. 25x48 41-47 63. 48-37 47-29 64. 37-41

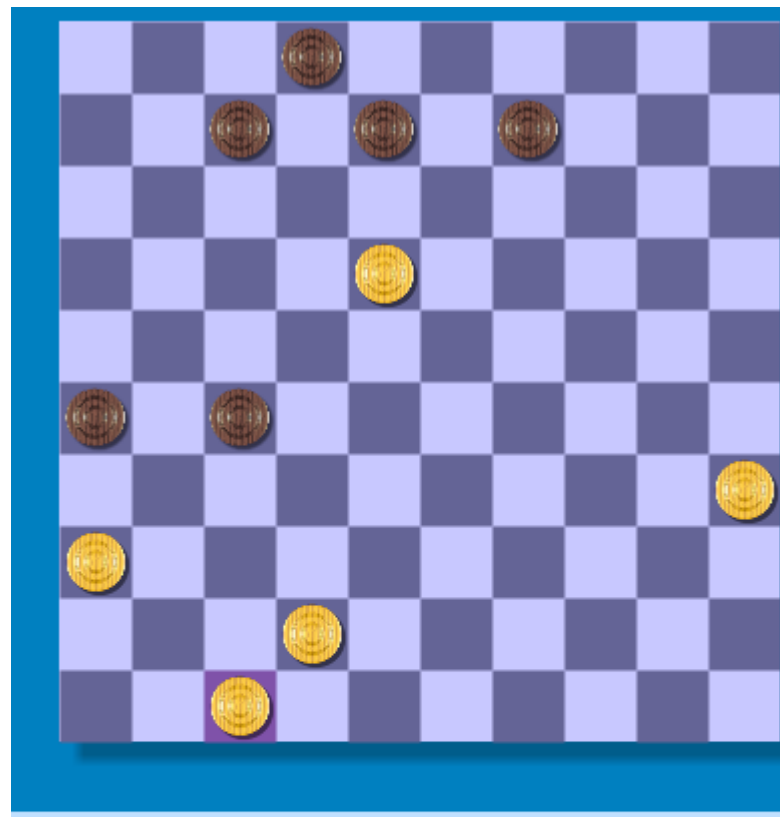
De 42<sup>e</sup> zet van wit (geeft remisekansen voor wit)



**Analyse huidige stelling**

zet	diepte	Score	Zet van tegenstander
28-22	8	-1.456	27x18 33-28 18-22 28x17
28-23	7	-2.184	29x18 40-34 8-13
40-35	7	-2.224	3-9 28-23 29x18
47-41	7	-2.256	3-9 28-23 29x18
42-37	6	-3.408	27-32 38x27 29x38
40-34	6	-4.512	29x40 28-23 40-45
38-32	6	-4.672	27x38 28-22 38-43
36-31	5	-6.176	26x37x48 40-35

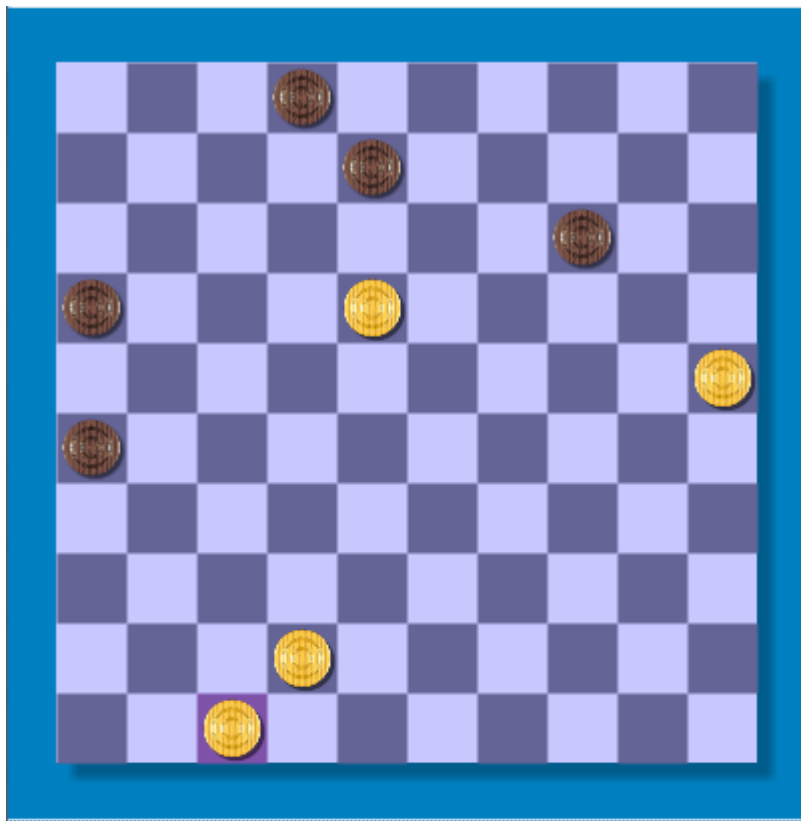
De 46<sup>e</sup> zet van zwart (8-13 is winnend!)



**Analyse huidige stelling**

zet	diepte	Score	Zet van tegenstander
8-13	8	3.096	18-12 7x18 42-38 18-22
7-11	7	1.960	35-30 2-7 30-24
27-32	6	1.376	47-41 7-11 35-30
7-12	6	1.288	18x7 2x11 35-30
26-31	6	1.168	47-41 8-13 18-12
9-14	6	1.112	35-30 7-11 42-37
8-12	6	1.096	18-13 9x18 35-30
27-31	6	0.784	36x27 8-13 27-22
9-13	5	-0.928	18x9 8-13

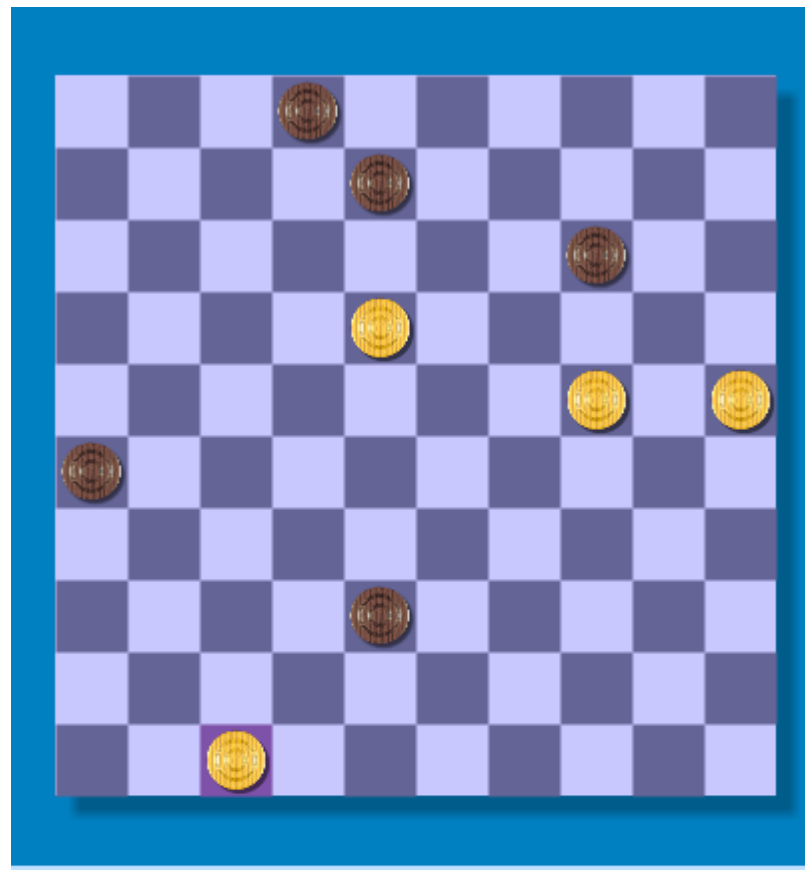
De 51<sup>e</sup> zet van zwart (ook 8-12 loopt remise)



**Analyse huidige stelling**

zet	diepte	Score	Zet van tegenstander
8-12	8	1.744	18x7 2x11 42-38 16-21
16-21	8	0.680	42-38 21-27 38-33 27-32
26-31	8	0.520	42-38 16-21 38-33 21-27
2-7	8	0.432	42-38 16-21 38-33 21-27
14-19	6	-0.080	18-13 2-7 13x24
14-20	5	-2.120	25x14 26-31
8-13	5	-2.304	18x9x20 16-21

De 55<sup>e</sup> zet van zwart (ook 14-19 loopt remise)



**Analyse huidige stelling**

zet	diepte	Score	Zet van tegenstander
14-19	8	1.624	24x13 8x19 18-13 19x8
2-7	6	0.528	24-20 14-19 18-13
26-31	6	0.336	24-20 14-19 20-15
38-43	8	0.240	24-20 14-19 20-15 2-7
8-12	6	0.184	18x7 2x11 24-20
38-42	6	0.032	47x38 26-31 24-20
8-13	6	0.000	18x9x20 38-43 20-14
14-20	6	0.000	24x15 38-43 15-10