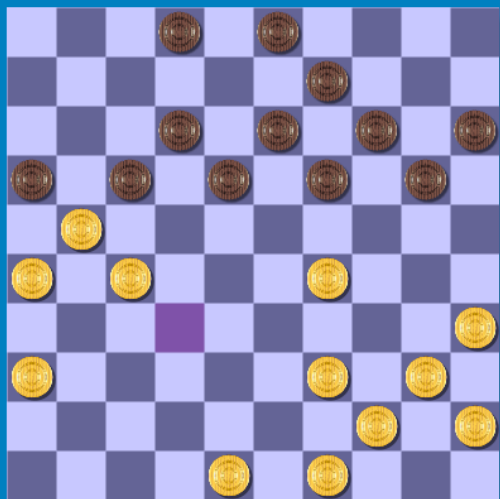


Wit: **Wim van Kasteren**
Zwart: **Lous van den Oetelaar**
Resultaat: *****
Datum: **4-2-2016**
Toernooi:
Plek:
Ronde:



1. 32-28 18-23 2. 34-29 23x32 3. 37x28 12-18 4. 41-37 7-12 5. 37-32 1-7 6. 46-41 19-24 7. 41-37 17-22 8. 28x17 12x21 9. 32-28 14-19 10. 39-34 20-25 11. 29x20 25x14 12. 37-32 21-26 13. 44-39 26x37 14. 42x31 7-12 15. 34-29 14-20 16. 47-42 10-14 17. 31-27 5-10 18. 27-22 18x27 19. 32x21 16x27 20. 28-23 19x28 21. 33x22x31 14-19 22. 50-44 10-14 23. 38-32 13-18 24. 42-38 9-13 25. 32-27 4-9 26. 38-32 11-16 27. 43-38 12-17 28. 31-26 8-12 29. 27-21 16x27 30. 32x21 6-11 31. 38-32 11-16 32. 32-27 2-7
(20-24 !! 33. 29x20 20-24 34. 27-22 20-24 35. 22x11 20-24 36. 27-22 20-24 37. 27-22 20-24 38. 27-22 20-24 39. 27-22 20-24 40. 27-22 20-24 41. 27-22 20-24 42. 27-22 20-24 -1.34 at 15 ply)
33. 27-22 17x28 34. 39-34 16x27 35. 29-23 18x29 36. 34x23x32x21 7-11 37. 44-39 13-18 38. 39-33 19-23 39. 49-43 9-13 40. 33-29 ?-1.01 at 15 ply
(40. 21-16 is better 23-28 41. 21-16 28x39 42. 21-16 23-28 43. 21-16 -0.18 at 14 ply)
... 23x34 41. 40x29 14-19 42. 43-39 3-9 43. 36-31 20-24 ?-0.09 at 17 ply
(19-23 may be better 44. 45-40 19-24 45. 45-40 19-24 46. 45-40 19-24 -0.23 at 16 ply)
44. 29x20 15x24 45. 45-40 19-23 46. 40-34 24-29 47. 48-43 29x40 48. 35x44 12-17 49. 21x12 18x7 50. 39-33 11-16 51. 31-27 13-19 52. 43-39 9-14 53. 44-40 19-24 54. 40-34 14-20 55. 27-22
(55. 33-28 !! 23x32x21 56. 26x17 24x35 57. 30x19x28 24x35 58. 30x19x28 24x35 59. 30x19x28 24x35 60. 30x19x28 24x35 61. 30x19x28 24x35 62. 30x19x28 24x35 63. 30x19x28 24x35 64. 30x19x28 24x35 65. 30x19x28 and white wins .00 at 20 ply)
... 7-11 56. 33-28 23x32 57. 22-18 -0.14 at 12 ply

+1.00 voor wit

-1.00 voor wit

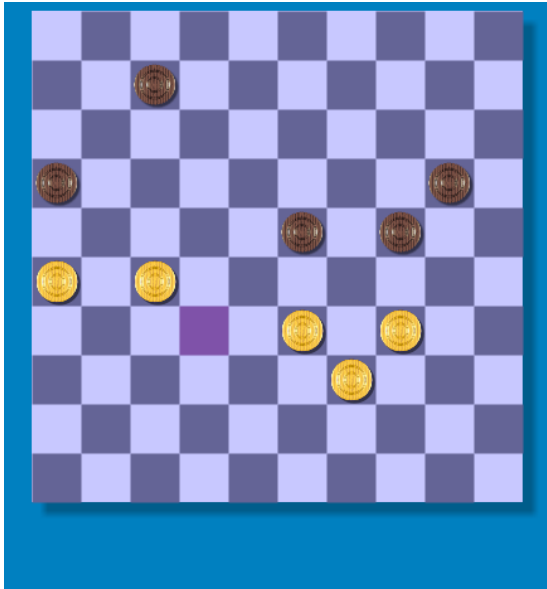
Als je i.p.v. 2-7 (32^e zet) 20-24 speelt, win je de schijf wel!

33. 29x20 15x24 (daardoor is de 3 om 3 niet mogelijk)

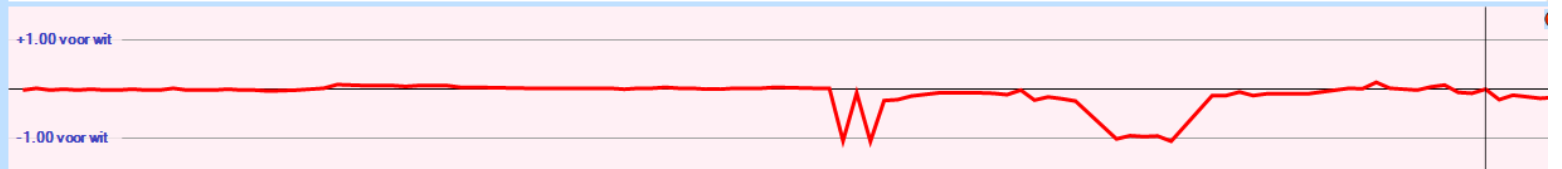
34. 48-42 2-7

35. 42-38 18-22

36. 27x18 16x27 (en schijf 18 gaat verloren)



1. 32-28 18-23 2. 34-29 23x32 3. 37x28 12-18 4. 41-37 7-12 5. 37-32 1-7 6. 46-41 19-24 7. 41-37 17-22 8. 28x17 12x21 9. 32-28 14-19 10. 39-34 20-25 11. 29x20 25x14 12. 37-32 21-26 13. 44-39 26x37 14. 42x31 7-12 15. 34-29 14-20 16. 47-42 10-14 17. 31-27 5-10 18. 27-22 18x27 19. 32x21 16x27 20. 28-23 19x28 21. 33x22x31 14-19 22. 50-44 10-14 23. 38-32 13-18 24. 42-38 9-13 25. 32-27 4-9 26. 38-32 11-16 27. 43-38 12-17 28. 31-26 8-12 29. 27-21 16x27 30. 32x21 6-11 31. 38-32 11-16 32. 32-27 2-7
 (20-24 !! 33. 29x20 20-24 34. 27-22 20-24 35. 22x11 20-24 36. 27-22 20-24 37. 27-22 20-24 38. 27-22 20-24 39. 27-22 20-24 40. 27-22 20-24 41. 27-22 20-24 42. 27-22 20-24 -1.34 at 15 ply)
 33. 27-22 17x28 34. 39-34 16x27 35. 29-23 18x29 36. 34x23x32x21 7-11 37. 44-39 13-18 38. 39-33 19-23 39. 49-43 9-13 40. 33-29 ? -1.01 at 15 ply
 (40. 21-16 is better 23-28 41. 21-16 28x39 42. 21-16 23-28 43. 21-16 -0.18 at 14 ply)
 ... 23x34 41. 40x29 14-19 42. 43-39 3-9 43. 36-31 20-24 ? -0.09 at 17 ply
 (19-23 may be better 44. 45-40 19-24 45. 45-40 19-24 46. 45-40 19-24 -0.23 at 16 ply)
 44. 29x20 15x24 45. 45-40 19-23 46. 40-34 24-29 47. 48-43 29x40 48. 35x44 12-17 49. 21x12 18x7 50. 39-33 11-16 51. 31-27 13-19 52. 43-39 9-14 53. 44-40 19-24 54. 40-34 14-20 55. 27-22
 (55. 33-28 !! 23x32x21 56. 26x17 24x35 57. 30x19x28 24x35 58. 30x19x28 24x35 59. 30x19x28 24x35 60. 30x19x28 24x35 61. 30x19x28 24x35 62. 30x19x28 24x35 63. 30x19x28 24x35 64. 30x19x28 24x35 65. 30x19x28 and white wins .00 at 20 ply)
 ... 7-11 56. 33-28 23x32 57. 22-18 -0.14 at 12 ply



Analyse huidige stelling

zet	diepte	Score	Zet van tegenstander
33-28	8	0.024	23x32x21 26x17 16-21 17x26
34-30	7	-0.496	24x35 39-34 20-24
27-22	7	-0.496	7-11 33-28 24x35
26-21	6	-1.936	7-11 34-30 23-28
27-21	5	-3.576	16x27 34-30
33-29	5	-5.000	24x33x44 34-30
34-29	5	-5.016	23x34x43 26-21

Deze stand was remise, ook al zou 33-28 zijn gespeeld.