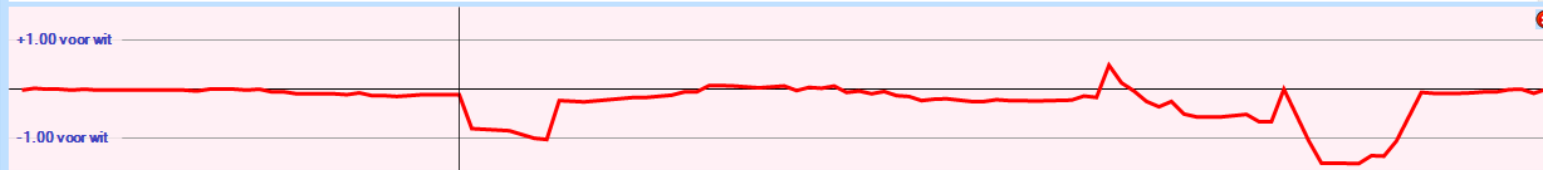
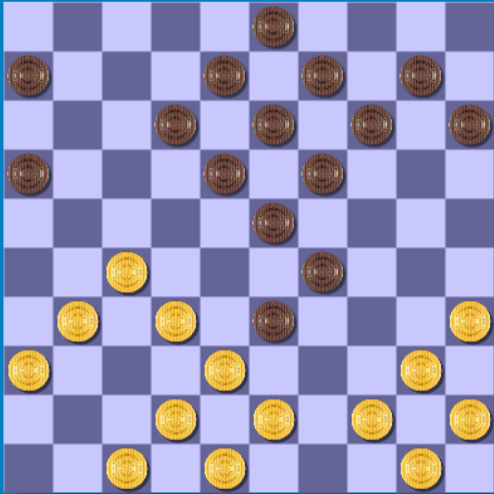


1. 32-28 18-23 2. 38-32 12-18 3. 43-38 7-12 4. 49-43 1-7 5. 31-27 17-22 6. 28x17 11x22x31 7. 37x26 7-11 8. 41-37 12-17 9. 37-31 8-12 10. 34-30 20-24 11. 30-25 2-8 12. 46-41 14-20 13. 25x14 9x20 14. 41-37 10-14 15. 33-28 4-9 16. 31-27 24-29 17. 39-33 5-10 18. 33x24 20x29 19. 37-31
 (19. 43-39 may be better 17-21 20. 26x17 17-21 21. 27-21 16x27 22. 32x21 23x32x43x34 -0.89 at 15 ply)
 ... 17-21 20. 26x17 11x22x33 21. 27-22 -1.05 at 12 ply
 (21. 43-39 is better 15-20 22. 39x28 12-17 23. 43-39 15-20 24. 43-39 15-20 25. 43-39 15-20 26. 43-39 15-20 27. 43-39 15-20 28. 43-39 15-20 29. 43-39 15-20 30. 43-39 15-20 31. 43-39 -0.24 at 11 ply)
 ... 18x27 22. 31x22 6-11 ?-0.10 at 15 ply
 (12-18 !! 23. 22-18 12-18 24. 22-18 12-18 25. 22-18 12-18 26. 22-18 12-18 27. 22-18 12-18 28. 22-18 12-18 29. 22-18 12-18 30. 22-18 12-18 31. 22-18 12-18 32. 22-18 12-18 -1.19 at 14 ply)
 23. 22-18 13x22 24. 32-28 23x32 25. 38x27x18x7 11x2 26. 43-39 8-12 27. 39x28 12-17 28. 42-38 15-20 29. 44-39 10-15 30. 40-34 29x40 31. 45x34 9-13 32. 39-33 3-8 33. 36-31 20-25 34. 47-42 14-20 35. 38-32 20-24 36. 31-27 8-12 37. 42-38 17-21 38. 34-29 12-18 39. 29x20 15x24 40. 48-42 25-30 41. 50-44 30-34 42. 44-39 34x43 43. 38x49 2-7 44. 49-44 7-12
 (18-23 is better 45. 35-30 24x35 46. 35-30 18-23 47. 35-30 11-17 -0.17 at 13 ply) 45. 44-39
 (45. 35-30 is interessant 24x35 46. 42-37 12-17 47. 42-37 12-17 48. 42-37 -0.15 at 13 ply)
 ... 21-26 46. 42-37
 (46. 42-38 ! 18-23 47. 28-22 18-23 48. 28-22 18-23 49. 28-22 18-23 -0.03 at 14 ply)
 ... 18-23 47. 39-34 12-17 48. 27-22 16-21 49. 22x11 21-27 50. 32x21 26x17x6 51. 37-32 13-18
 (6-11 looks better 52. 34-30 11-17 53. 34-30 11-17 54. 34-30 11-17 55. 34-30 11-17 56. 34-30 11-17 57. 34-30 11-17 58. 34-30 11-17 59. 34-30 11-17 60. 34-30 11-17 61. 34-30 11-17 -0.30 at 15 ply) 52. 34-29 ?-1.10 at 21 ply
 (52. 32-27 is better 23x32x21 53. 30-25 24x35 54. 30-25 24x35 55. 30-25 24x35 56. 30-25 24x35 57. 30-25 24x35 58. 30-25 24x35 59. 30-25 24x35 60. 30-25 24x35 61. 30-25 24x35 62. 30-25 draw at 20 ply)
 ... 23x34 53. 32-27 18-23 54. 27-22 23x32 55. 22-18 6-11 56. 18-12 11-17 57. 12x21 32-37 58. 21-17 37-42 59. 17-12 19-23 60. 12-7 42-48 61. 35-30 24x35 62. 33-29 0.00 at 10 ply

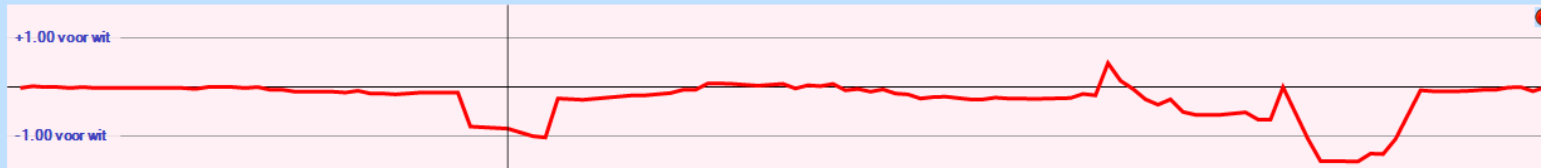


Analyse huidige stelling

zet	diepte	Score	Zet van tegenstander
43-39	8	-0.200	29-33 38x29 23x34x43 48x39
36-31	7	-0.808	17-21 26x17 11x22x33
47-41	7	-0.856	17-21 26x17 11x22x33
37-31	7	-0.880	17-21 26x17 11x22x33
26-21	7	-0.984	17x26 44-39 11-17
35-30	7	-1.000	17-22 27x16x7 12x1
44-39	7	-1.048	17-21 26x17 11x22x33x44
28-22	7	-1.064	17x28 44-39 19-24
27-21	6	-2.304	16x27 32x21 23x32x41
40-34	6	-2.304	29x40x49 50-44 49x40
27-22	6	-2.352	18x27 32x21 23x32x41
38-33	6	-3.232	29x38x49 28-22 17x28

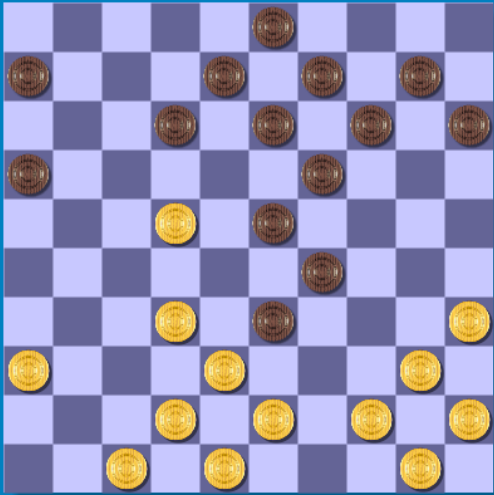


1. 32-28 18-23 2. 38-32 12-18 3. 43-38 7-12 4. 49-43 1-7 5. 31-27 17-22 6. 28x17 11x22x31 7. 37x26 7-11 8. 41-37 12-17 9. 37-31 8-12 10. 34-30 20-24 11. 30-25 2-8 12. 46-41 14-20 13. 25x14 9x20 14. 41-37 10-14 15. 33-28 4-9 16. 31-27 24-29 17. 39-33 5-10 18. 33x24 20x29 19. 37-31
 (19. 43-39 may be better 17-21 20. 26x17 17-21 21. 27-21 16x27 22. 32x21 23x32x43x34 -0.89 at 15 ply)
 ... 17-21 20. 26x17 11x22x33 21. 27-22 -1.05 at 12 ply
 (21. 43-39 is better 15-20 22. 39x28 12-17 23. 43-39 15-20 24. 43-39 15-20 25. 43-39 15-20 26. 43-39 15-20 27. 43-39 15-20 28. 43-39 15-20 29. 43-39 15-20 30. 43-39 15-20 31. 43-39 -0.24 at 11 ply)
 ... 18x27 22. 31x22 6-11 ?-0.10 at 15 ply
 (12-18 !! 23. 22-18 12-18 24. 22-18 12-18 25. 22-18 12-18 26. 22-18 12-18 27. 22-18 12-18 28. 22-18 12-18 29. 22-18 12-18 30. 22-18 12-18 31. 22-18 12-18 32. 22-18 12-18 -1.19 at 14 ply)
 23. 22-18 13x22 24. 32-28 23x32 25. 38x27x18x7 11x2 26. 43-39 8-12 27. 39x28 12-17 28. 42-38 15-20 29. 44-39 10-15 30. 40-34 29x40 31. 45x34 9-13 32. 39-33 3-8 33. 36-31 20-25 34. 47-42 14-20 35. 38-32 20-24 36. 31-27 8-12 37. 42-38 17-21 38. 34-29 12-18 39. 29x20 15x24 40. 48-42 25-30 41. 50-44 30-34 42. 44-39 34x43 43. 38x49 2-7 44. 49-44 7-12
 (18-23 is better 45. 35-30 24x35 46. 35-30 18-23 47. 35-30 11-17 -0.17 at 13 ply) 45. 44-39
 (45. 35-30 is interessant 24x35 46. 42-37 12-17 47. 42-37 12-17 48. 42-37 -0.15 at 13 ply)
 ... 21-26 46. 42-37
 (46. 42-38 ! 18-23 47. 28-22 18-23 48. 28-22 18-23 49. 28-22 18-23 -0.03 at 14 ply)
 ... 18-23 47. 39-34 12-17 48. 27-22 16-21 49. 22x11 21-27 50. 32x21 26x17x6 51. 37-32 13-18
 (6-11 looks better 52. 34-30 11-17 53. 34-30 11-17 54. 34-30 11-17 55. 34-30 11-17 56. 34-30 11-17 57. 34-30 11-17 58. 34-30 11-17 59. 34-30 11-17 60. 34-30 11-17 61. 34-30 11-17 -0.30 at 15 ply) 52. 34-29 ?-1.10 at 21 ply
 (52. 32-27 is better 23x32x21 53. 30-25 24x35 54. 30-25 24x35 55. 30-25 24x35 56. 30-25 24x35 57. 30-25 24x35 58. 30-25 24x35 59. 30-25 24x35 60. 30-25 24x35 61. 30-25 24x35 62. 30-25 draw at 20 ply)
 ... 23x34 53. 32-27 18-23 54. 27-22 23x32 55. 22-18 6-11 56. 18-12 11-17 57. 12x21 32-37 58. 21-17 37-42 59. 17-12 19-23 60. 12-7 42-48 61. 35-30 24x35 62. 33-29 0.00 at 10 ply

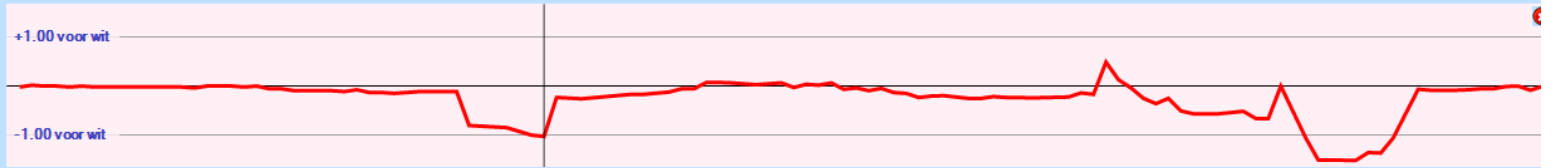


Analyse huidige stelling

zet	diepte	Score	Zet van tegenstander
43-39	8	-0.736	12-17 32x23x34 6-11 39x28
47-41	8	-0.840	6-11 43-39 12-17 39x28
35-30	8	-0.864	12-17 40-35 14-20 44x33x24
31-26	8	-0.888	12-17 43-39 19-24 38x29x20
27-22	8	-0.928	18x27 31x22 12-17 22x11
27-21	8	-1.024	16x27 31x22 18x27 32x21
44-39	8	-1.048	33x44 40x49 14-20 32x23x34
42-37	8	-1.072	33x42 47x38 6-11 27-21
32-28	6	-3.176	23x32x21 31-26 29-34
40-34	5	-6.696	29x40x49 38x29

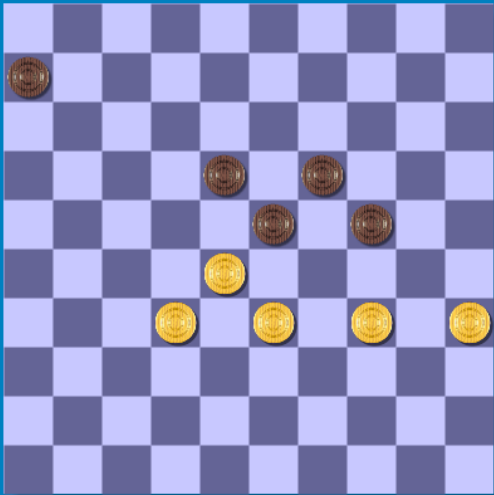


1. 32-28 18-23 2. 38-32 12-18 3. 43-38 7-12 4. 49-43 1-7 5. 31-27 17-22 6. 28x17 11x22x31 7. 37x26 7-11 8. 41-37 12-17 9. 37-31 8-12 10. 34-30 20-24 11. 30-25 2-8 12. 46-41 14-20 13. 25x14 9x20 14. 41-37 10-14 15. 33-28 4-9 16. 31-27 24-29 17. 39-33 5-10 18. 33x24 20x29 19. 37-31
 (19. 43-39 *may be better* 17-21 20. 26x17 17-21 21. 27-21 16x27 22. 32x21 23x32x43x34 *-0.89 at 15 ply*)
 ... 17-21 20. 26x17 11x22x33 21. 27-22 *-1.05 at 12 ply*
 (21. 43-39 *is better* 15-20 22. 39x28 12-17 23. 43-39 15-20 24. 43-39 15-20 25. 43-39 15-20 26. 43-39 15-20 27. 43-39 15-20 28. 43-39 15-20 29. 43-39 15-20 30. 43-39 15-20 31. 43-39 *-0.24 at 11 ply*)
 ... 18x27 22. 31x22 6-11 ? *-0.10 at 15 ply*
 (12-18 !! 23. 22-18 12-18 24. 22-18 12-18 25. 22-18 12-18 26. 22-18 12-18 27. 22-18 12-18 28. 22-18 12-18 29. 22-18 12-18 30. 22-18 12-18 31. 22-18 12-18 32. 22-18 12-18 *-1.19 at 14 ply*)
 23. 22-18 13x22 24. 32-28 23x32 25. 38x27x18x7 11x2 26. 43-39 8-12 27. 39x28 12-17 28. 42-38 15-20 29. 44-39 10-15 30. 40-34 29x40 31. 45x34 9-13 32. 39-33 3-8 33. 36-31 20-25 34. 47-42 14-20 35. 38-32 20-24 36. 31-27 8-12 37. 42-38 17-21 38. 34-29 12-18 39. 29x20 15x24 40. 48-42 25-30 41. 50-44 30-34 42. 44-39 34x43 43. 38x49 2-7 44. 49-44 7-12
 (18-23 *is better* 45. 35-30 24x35 46. 35-30 18-23 47. 35-30 11-17 *-0.17 at 13 ply*) 45. 44-39
 (45. 35-30 *is interessant* 24x35 46. 42-37 12-17 47. 42-37 12-17 48. 42-37 *-0.15 at 13 ply*)
 ... 21-26 46. 42-37
 (46. 42-38 | 18-23 47. 28-22 18-23 48. 28-22 18-23 49. 28-22 18-23 *-0.03 at 14 ply*)
 ... 18-23 47. 39-34 12-17 48. 27-22 16-21 49. 22x11 21-27 50. 32x21 26x17x6 51. 37-32 13-18
 (6-11 *looks better* 52. 34-30 11-17 53. 34-30 11-17 54. 34-30 11-17 55. 34-30 11-17 56. 34-30 11-17 57. 34-30 11-17 58. 34-30 11-17 59. 34-30 11-17 60. 34-30 11-17 61. 34-30 11-17 *-0.30 at 15 ply*) 52. 34-29 ? *-1.10 at 21 ply*
 (52. 32-27 *is better* 23x32x21 53. 30-25 24x35 54. 30-25 24x35 55. 30-25 24x35 56. 30-25 24x35 57. 30-25 24x35 58. 30-25 24x35 59. 30-25 24x35 60. 30-25 24x35 61. 30-25 24x35 62. 30-25 *draw at 20 ply*)
 ... 23x34 53. 32-27 18-23 54. 27-22 23x32 55. 22-18 6-11 56. 18-12 11-17 57. 12x21 32-37 58. 21-17 37-42 59. 17-12 19-23 60. 12-7 42-48 61. 35-30 24x35 62. 33-29 *0.00 at 10 ply*

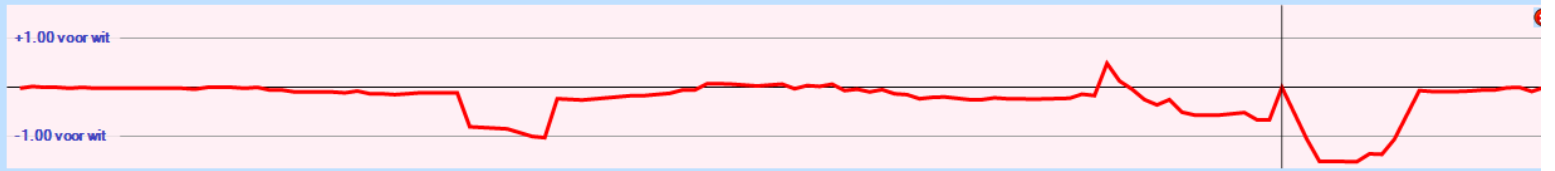


Analyse huidige stelling

zet	diepte	Score	Zet van tegenstander
12-18	8	1.048	22-17 15-20 36-31 20-24
12-17	8	0.880	22x11 6x17 36-31 13-18
6-11	7	0.144	22-18 12-17 42-37
33-39	6	-0.824	44x33x24 19x30 35x24
23-28	6	-1.088	32x23x34 12-18 38x29
19-24	6	-1.280	22-18 13x22 32-28
15-20	6	-1.288	22-18 13x22 32-28
16-21	6	-1.296	22-18 13x22 32-28
14-20	6	-1.384	22-18 13x22 32-28
29-34	6	-2.032	40x29x18x7 6-11 38x29
13-18	5	-4.664	22x13x2 12-17



1. 32-28 18-23 2. 38-32 12-18 3. 43-38 7-12 4. 49-43 1-7 5. 31-27 17-22 6. 28x17 11x22x31 7. 37x26 7-11 8. 41-37 12-17 9. 37-31 8-12 10. 34-30 20-24 11. 30-25 2-8 12. 46-41 14-20 13. 25x14 9x20 14. 41-37 10-14 15. 33-28 4-9 16. 31-27 24-29 17. 39-33 5-10 18. 33x24 20x29 19. 37-31
 (19. 43-39 may be better 17-21 20. 26x17 17-21 21. 27-21 16x27 22. 32x21 23x32x43x34 -0.89 at 15 ply)
 ... 17-21 20. 26x17 11x22x33 21. 27-22 -1.05 at 12 ply
 (21. 43-39 is better 15-20 22. 39x28 12-17 23. 43-39 15-20 24. 43-39 15-20 25. 43-39 15-20 26. 43-39 15-20 27. 43-39 15-20 28. 43-39 15-20 29. 43-39 15-20 30. 43-39 15-20 31. 43-39 -0.24 at 11 ply)
 ... 18x27 22. 31x22 6-11 ?-0.10 at 15 ply
 (12-18 !! 23. 22-18 12-18 24. 22-18 12-18 25. 22-18 12-18 26. 22-18 12-18 27. 22-18 12-18 28. 22-18 12-18 29. 22-18 12-18 30. 22-18 12-18 31. 22-18 12-18 32. 22-18 12-18 -1.19 at 14 ply)
 23. 22-18 13x22 24. 32-28 23x32 25. 38x27x18x7 11x2 26. 43-39 8-12 27. 39x28 12-17 28. 42-38 15-20 29. 44-39 10-15 30. 40-34 29x40 31. 45x34 9-13 32. 39-33 3-8 33. 36-31 20-25 34. 47-42 14-20 35. 38-32 20-24 36. 31-27 8-12 37. 42-38 17-21 38. 34-29 12-18 39. 29x20 15x24 40. 48-42 25-30 41. 50-44 30-34 42. 44-39 34x43 43. 38x49 2-7 44. 49-44 7-12
 (18-23 is better 45. 35-30 24x35 46. 35-30 18-23 47. 35-30 11-17 -0.17 at 13 ply) 45. 44-39
 (45. 35-30 is interessant 24x35 46. 42-37 12-17 47. 42-37 12-17 48. 42-37 -0.15 at 13 ply)
 ... 21-26 46. 42-37
 (46. 42-38 ! 18-23 47. 28-22 18-23 48. 28-22 18-23 49. 28-22 18-23 -0.03 at 14 ply)
 ... 18-23 47. 39-34 12-17 48. 27-22 16-21 49. 22x11 21-27 50. 32x21 26x17x6 51. 37-32 13-18
 (6-11 looks better 52. 34-30 11-17 53. 34-30 11-17 54. 34-30 11-17 55. 34-30 11-17 56. 34-30 11-17 57. 34-30 11-17 58. 34-30 11-17 59. 34-30 11-17 60. 34-30 11-17 61. 34-30 11-17 -0.30 at 15 ply) 52. 34-29 ?-1.10 at 21 ply
 (52. 32-27 is better 23x32x21 53. 30-25 24x35 54. 30-25 24x35 55. 30-25 24x35 56. 30-25 24x35 57. 30-25 24x35 58. 30-25 24x35 59. 30-25 24x35 60. 30-25 24x35 61. 30-25 24x35 62. 30-25 draw at 20 ply)
 ... 23x34 53. 32-27 18-23 54. 27-22 23x32 55. 22-18 6-11 56. 18-12 11-17 57. 12x21 32-37 58. 21-17 37-42 59. 17-12 19-23 60. 12-7 42-48 61. 35-30 24x35 62. 33-29 0.00 at 10 ply

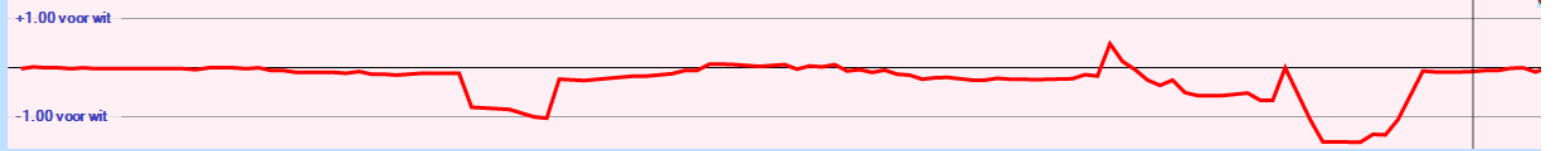


Analyse huidige stelling

zet	diepte	Score	Zet van tegenstander
32-27	8	-0.248	23x32x21 34-29 18-22 29x20
34-29	8	-0.760	23x34 32-27 18-23 27-21
33-29	6	-1.096	24x33x22 35-30 6-11
35-30	6	-1.224	24x35 34-29 23x34
34-30	8	-1.304	23-29 30-25 29x38x27 35-30
28-22	4	-200.000	18x27x38x29x40

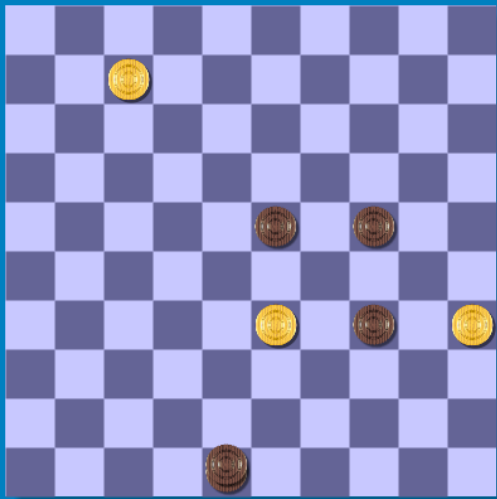


1. 32-28 18-23 2. 38-32 12-18 3. 43-38 7-12 4. 49-43 1-7 5. 31-27 17-22 6. 28x17 11x22x31 7. 37x26 7-11 8. 41-37 12-17 9. 37-31 8-12 10. 34-30 20-24 11. 30-25 2-8 12. 46-41 14-20 13. 25x14 9x20 14. 41-37 10-14 15. 33-28 4-9 16. 31-27 24-29 17. 39-33 5-10 18. 33x24 20x29 19. 37-31
 (19. 43-39 may be better 17-21 20. 26x17 17-21 21. 27-21 16x27 22. 32x21 23x32x43x34 -0.89 at 15 ply)
 ... 17-21 20. 26x17 11x22x33 21. 27-22 -1.05 at 12 ply
 (21. 43-39 is better 15-20 22. 39x28 12-17 23. 43-39 15-20 24. 43-39 15-20 25. 43-39 15-20 26. 43-39 15-20 27. 43-39 15-20 28. 43-39 15-20 29. 43-39 15-20 30. 43-39 15-20 31. 43-39 -0.24 at 11 ply)
 ... 18x27 22. 31x22 6-11 ?-0.10 at 15 ply
 (12-18 !! 23. 22-18 12-18 24. 22-18 12-18 25. 22-18 12-18 26. 22-18 12-18 27. 22-18 12-18 28. 22-18 12-18 29. 22-18 12-18 30. 22-18 12-18 31. 22-18 12-18 32. 22-18 12-18 -1.19 at 14 ply)
 23. 22-18 13x22 24. 32-28 23x32 25. 38x27x18x7 11x2 26. 43-39 8-12 27. 39x28 12-17 28. 42-38 15-20 29. 44-39 10-15 30. 40-34 29x40 31. 45x34 9-13 32. 39-33 3-8 33. 36-31 20-25 34. 47-42 14-20 35. 38-32 20-24 36. 31-27 8-12 37. 42-38 17-21 38. 34-29 12-18 39. 29x20 15x24 40. 48-42 25-30 41. 50-44 30-34 42. 44-39 34x43 43. 38x49 2-7 44. 49-44 7-12
 (18-23 is better 45. 35-30 24x35 46. 35-30 18-23 47. 35-30 11-17 -0.17 at 13 ply) 45. 44-39
 (45. 35-30 is interessant 24x35 46. 42-37 12-17 47. 42-37 12-17 48. 42-37 -0.15 at 13 ply)
 ... 21-26 46. 42-37
 (46. 42-38 ! 18-23 47. 28-22 18-23 48. 28-22 18-23 49. 28-22 18-23 -0.03 at 14 ply)
 ... 18-23 47. 39-34 12-17 48. 27-22 16-21 49. 22x11 21-27 50. 32x21 26x17x6 51. 37-32 13-18
 (6-11 looks better 52. 34-30 11-17 53. 34-30 11-17 54. 34-30 11-17 55. 34-30 11-17 56. 34-30 11-17 57. 34-30 11-17 58. 34-30 11-17 59. 34-30 11-17 60. 34-30 11-17 61. 34-30 11-17 -0.30 at 15 ply) 52. 34-29 ?-1.10 at 21 ply
 (52. 32-27 is better 23x32x21 53. 30-25 24x35 54. 30-25 24x35 55. 30-25 24x35 56. 30-25 24x35 57. 30-25 24x35 58. 30-25 24x35 59. 30-25 24x35 60. 30-25 24x35 61. 30-25 24x35 62. 30-25 draw at 20 ply)
 ... 23x34 53. 32-27 18-23 54. 27-22 23x32 55. 22-18 6-11 56. 18-12 11-17 57. 12x21 32-37 58. 21-17 37-42 59. 17-12 19-23 60. 12-7 42-48 61. 35-30 24x35 62. 33-29 0.00 at 10 ply

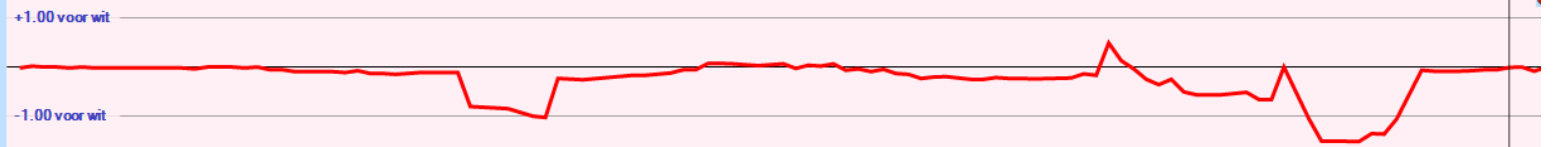


Analyse huidige stelling

zet	diepte	Score	Zet van tegenstander
42-47	8	0.648	33-28 47-29 12-8 29-23
42-48	8	0.032	12-8 48-42 35x44 24-30
19-23	7	0.032	12-8 42-48 8-3
34-40	7	0.024	35x44 42-48 12-8
34-39	7	0.000	33x44 42-48 35-30
24-30	7	0.000	35x24x13 42-48 12-8
24-29	7	0.000	33x24x13 42-48 12-8



1. 32-28 18-23 2. 38-32 12-18 3. 43-38 7-12 4. 49-43 1-7 5. 31-27 17-22 6. 28x17 11x22x31 7. 37x26 7-11 8. 41-37 12-17 9. 37-31 8-12 10. 34-30 20-24 11. 30-25 2-8 12. 46-41 14-20 13. 25x14 9x20 14. 41-37 10-14 15. 33-28 4-9 16. 31-27 24-29 17. 39-33 5-10 18. 33x24 20x29 19. 37-31
 (19. 43-39 may be better 17-21 20. 26x17 17-21 21. 27-21 16x27 22. 32x21 23x32x43x34 -0.89 at 15 ply)
 ... 17-21 20. 26x17 11x22x33 21. 27-22 -1.05 at 12 ply
 (21. 43-39 is better 15-20 22. 39x28 12-17 23. 43-39 15-20 24. 43-39 15-20 25. 43-39 15-20 26. 43-39 15-20 27. 43-39 15-20 28. 43-39 15-20 29. 43-39 15-20 30. 43-39 15-20 31. 43-39 -0.24 at 11 ply)
 ... 18x27 22. 31x22 6-11 ? -0.10 at 15 ply
 (12-18 !! 23. 22-18 12-18 24. 22-18 12-18 25. 22-18 12-18 26. 22-18 12-18 27. 22-18 12-18 28. 22-18 12-18 29. 22-18 12-18 30. 22-18 12-18 31. 22-18 12-18 32. 22-18 12-18 -1.19 at 14 ply)
 23. 22-18 13x22 24. 32-28 23x32 25. 38x27x18x7 11x2 26. 43-39 8-12 27. 39x28 12-17 28. 42-38 15-20 29. 44-39 10-15 30. 40-34 29x40 31. 45x34 9-13 32. 39-33 3-8 33. 36-31 20-25 34. 47-42 14-20 35. 38-32 20-24 36. 31-27 8-12 37. 42-38 17-21 38. 34-29 12-18 39. 29x20 15x24 40. 48-42 25-30 41. 50-44 30-34 42. 44-39 34x43 43. 38x49 2-7 44. 49-44 7-12
 (18-23 is better 45. 35-30 24x35 46. 35-30 18-23 47. 35-30 11-17 -0.17 at 13 ply) 45. 44-39
 (45. 35-30 is interessant 24x35 46. 42-37 12-17 47. 42-37 12-17 48. 42-37 -0.15 at 13 ply)
 ... 21-26 46. 42-37
 (46. 42-38 ! 18-23 47. 28-22 18-23 48. 28-22 18-23 49. 28-22 18-23 -0.03 at 14 ply)
 ... 18-23 47. 39-34 12-17 48. 27-22 16-21 49. 22x11 21-27 50. 32x21 26x17x6 51. 37-32 13-18
 (6-11 looks better 52. 34-30 11-17 53. 34-30 11-17 54. 34-30 11-17 55. 34-30 11-17 56. 34-30 11-17 57. 34-30 11-17 58. 34-30 11-17 59. 34-30 11-17 60. 34-30 11-17 61. 34-30 11-17 -0.30 at 15 ply) 52. 34-29 ? -1.10 at 21 ply
 (52. 32-27 is better 23x32x21 53. 30-25 24x35 54. 30-25 24x35 55. 30-25 24x35 56. 30-25 24x35 57. 30-25 24x35 58. 30-25 24x35 59. 30-25 24x35 60. 30-25 24x35 61. 30-25 24x35 62. 30-25 draw at 20 ply)
 ... 23x34 53. 32-27 18-23 54. 27-22 23x32 55. 22-18 6-11 56. 18-12 11-17 57. 12x21 32-37 58. 21-17 37-42 59. 17-12 19-23 60. 12-7 42-48 61. 35-30 24x35 62. 33-29 0.00 at 10 ply



Analyse huidige stelling

zet	diepte	Score	Zet van tegenstander
35-30	6	-0.064	24x35 33-29 35-40
33-29	8	-0.064	24x33 7-1 23-28 1x45
33-28	8	-0.080	23x32 7-1 34-39 1-6
7-1	4	-200.000	24-29
7-2	4	-200.000	23-29