

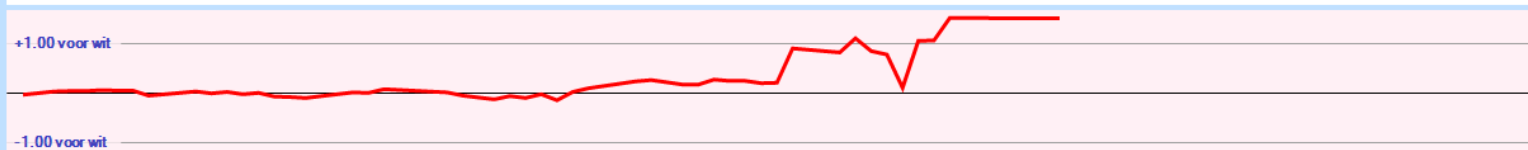
Wit: **Wim van Kasteren**
 Zwart: **Gerard Baltussen**
 Resultaat: *
 Datum: **4-2-2016**
 Toernooi:
 Plek:
 Ronde:

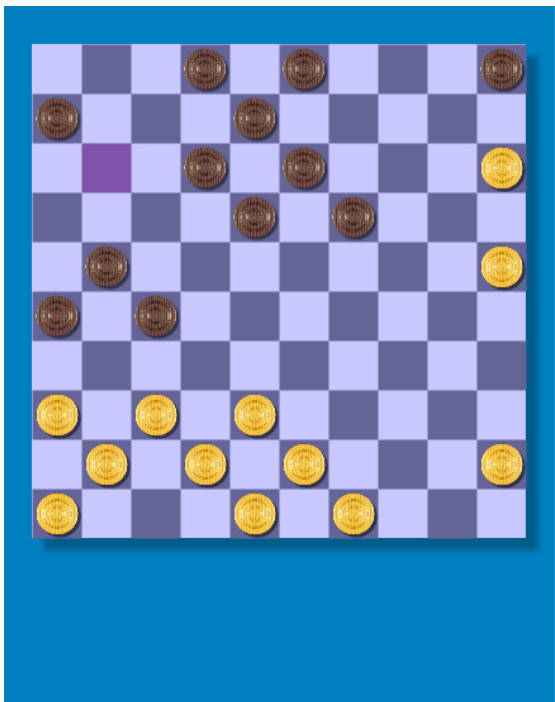


1. 32-28 19-23 2. 28x19 14x23 3. 37-32 9-14 4. 41-37 14-19 5. 33-28 17-22 6. 28x17 12x21 7. 34-30 20-24 8. 47-41 4-9 9. 30-25 10-14 10. 40-34 14-20 11. 25x14 9x20 12. 34-30 20-25 13. 44-40 25x34 14. 40x29x20 15x24 15. 39-34 7-12 16. 50-44 1-7 17. 44-40 21-26 18. 31-27
 (18. 32-28 looks better 23x32 19. 44-39 11-17 20. 44-39 11-17 21. 44-39 .01 at 11 ply) 11-17
 (5-10 may be better 19. 38-33 11-17 20. 38-33 11-17 21. 38-33 11-17 -0.07 at 11 ply)
 19. 27-22 18x27 .22 at 15 ply
 (17x28 !! 20. 34-29 24-29 21. 34-29 23x34 22. 32x23x14 24-29 -1.06 at 14 ply)
 20. 32x21 16x27 21. 34-29 23x34 22. 40x29x20 17-21 23. 35-30 12-18 24. 30-25 7-12 25. 20-15 18-23
 (6-11 ! 26. 45-40 6-11 27. 45-40 6-11 28. 45-40 6-11 .17 at 12 ply)
 26. 37-31 26x37 27. 42x31x22 6-11 28. 41-37
 (28. 38-32 is interessant 3-9 29. 25-20 3-9 30. 25-20 3-9 31. 25-20 3-9 32. 25-20 3-9 33. 25-20 3-9 34. 25-20 3-9 35. 25-20 3-9 36. 25-20 3-9 37. 25-20 3-9 38. 25-20 29 at 10 ply)
 ... 3-9 29. 37-32
 (29. 43-39 !! 12-17 30. 37-32 17x28x37 31. 37-32 12-17 32. 37-32 12-17 33. 37-32 12-17 34. 37-32 12-17 35. 37-32 12-17 36. 37-32 12-17 37. 37-32 12-17 38. 37-32 12-17 39. 37-32 .88 at 11 ply) 11-16
 (12-18 is better 30. 32-28 12-18 31. 32-28 12-18 32. 32-28 12-18 33. 32-28 12-18 34. 32-28 12-18 35. 32-28 12-18 36. 32-28 12-18 37. 32-28 12-18 38. 32-28 12-18 39. 32-28 12-18 .09 at 13 ply)
 30. 48-42 19-24 .18 at 14 ply
 (12-18 ! 31. 25-20 18x27 32. 25-20 21-26 33. 32x21 21-26 .05 at 13 ply)
 31. 22-18 13x22 32. 32-28 23x32 33. 38x27x18x7 2x11 34. 25-20 .17 at 10 ply

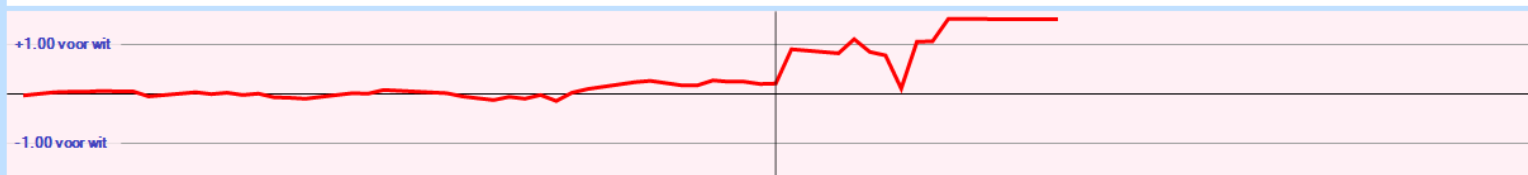
+1.00 voor wit

-1.00 voor wit



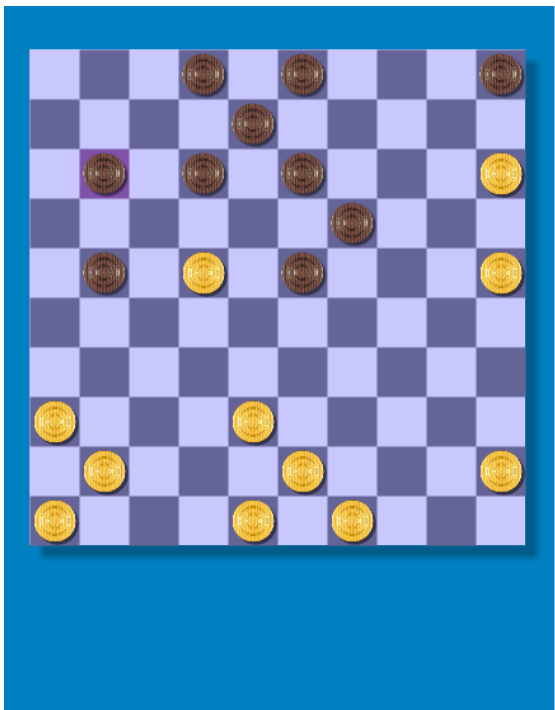


1. 32-28 19-23 2. 28x19 14x23 3. 37-32 9-14 4. 41-37 14-19 5. 33-28 17-22 6. 28x17 12x21 7. 34-30 20-24 8. 47-41 4-9 9. 30-25 10-14 10. 40-34 14-20 11. 25x14 9x20 12. 34-30 20-25 13. 44-40 25x34 14. 40x29x20 15x24 15. 39-34 7-12 16. 50-44 1-7 17. 44-40 21-26 18. 31-27
 (18. 32-28 looks better 23x32 19. 44-39 11-17 20. 44-39 11-17 21. 44-39 .01 at 11 ply) 11-17
 (5-10 may be better 19. 38-33 11-17 20. 38-33 11-17 21. 38-33 11-17 -0.07 at 11 ply)
 19. 27-22 18x27 .22 at 15 ply
 (17x28 !! 20. 34-29 24-29 21. 34-29 23x34 22. 32x23x14 24-29 -1.06 at 14 ply)
 20. 32x21 16x27 21. 34-29 23x34 22. 40x29x20 17-21 23. 35-30 12-18 24. 30-25 7-12 25. 20-15 18-23
 (6-11 ! 26. 45-40 6-11 27. 45-40 6-11 28. 45-40 6-11 .17 at 12 ply)
 26. 37-31 26x37 27. 42x31x22 6-11 28. 41-37
 (28. 38-32 is interessant 3-9 29. 25-20 3-9 30. 25-20 3-9 31. 25-20 3-9 32. 25-20 3-9 33. 25-20 3-9 34. 25-20 3-9 35. 25-20 3-9 36. 25-20 3-9 37. 25-20 3-9 38. 25-20 29 at 10 ply)
 ... 3-9 29. 37-32
 (29. 43-39 !! 12-17 30. 37-32 17x28x37 31. 37-32 12-17 32. 37-32 12-17 33. 37-32 12-17 34. 37-32 12-17 35. 37-32 12-17 36. 37-32 12-17 37. 37-32 12-17 38. 37-32 12-17 39. 37-32 .88 at 11 ply) 11-16
 (12-18 is better 30. 32-28 12-18 31. 32-28 12-18 32. 32-28 12-18 33. 32-28 12-18 34. 32-28 12-18 35. 32-28 12-18 36. 32-28 12-18 37. 32-28 12-18 38. 32-28 12-18 39. 32-28 12-18 .09 at 13 ply)
 30. 48-42 19-24 .18 at 14 ply
 (12-18 ! 31. 25-20 18x27 32. 25-20 21-26 33. 32x21 21-26 .05 at 13 ply)
 31. 22-18 13x22 32. 32-28 23x32 33. 38x27x18x7 2x11 34. 25-20 .17 at 10 ply

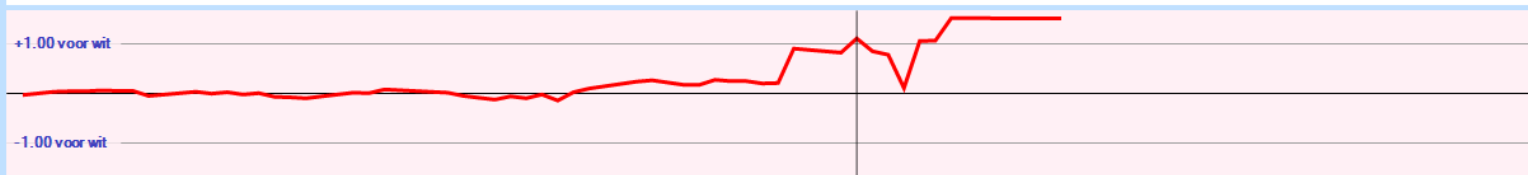


Analyse huidige stelling

zet	diepte	Score	Zet van tegenstander
18-22	8	-0.216	25-20 6-11 38-33 3-9
6-11	8	-0.216	25-20 3-9 45-40 12-17
19-23	8	-0.264	25-20 3-9 45-40 18-22
3-9	8	-0.272	45-40 6-11 43-39 11-16
2-7	8	-0.272	45-40 6-11 49-44 11-16
19-24	8	-0.528	38-33 6-11 43-38 11-16
18-23	7	-0.832	37-31 26x37 42x31x22
12-17	7	-1.048	37-31 26x37 42x31x22x11
26-31	7	-1.144	37x26x17 12x21 42-37
27-32	6	-2.200	38x27x16 3-9 43-39
27-31	6	-2.224	36x27x16 2-7 38-33
5-10	5	-4.136	15x4 3-9

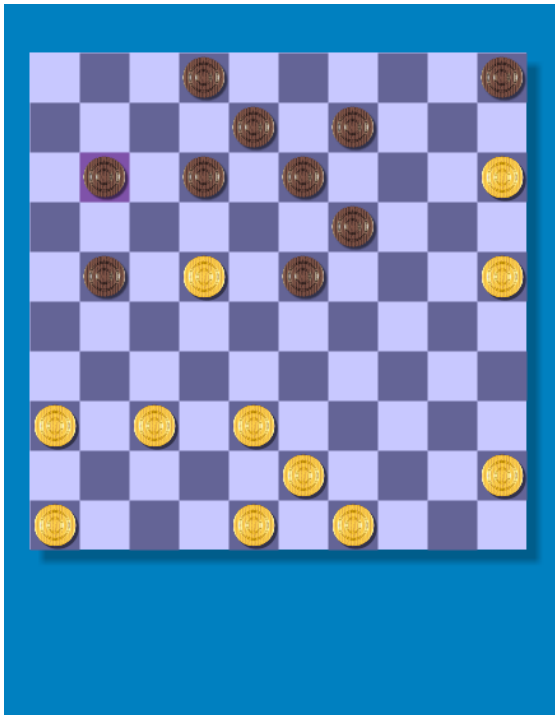


1. 32-28 19-23 **2.** 28x19 14x23 **3.** 37-32 9-14 **4.** 41-37 14-19 **5.** 33-28 17-22 **6.** 28x17 12x21 **7.** 34-30 20-24 **8.** 47-41 4-9 **9.** 30-25 10-14 **10.** 40-34 14-20 **11.** 25x14 9x20 **12.** 34-30 20-25 **13.** 44-40 25x34 **14.** 40x29x20 15x24 **15.** 39-34 7-12 **16.** 50-44 1-7 **17.** 44-40 21-26 **18.** 31-27
 (18. 32-28 looks better 23x32 19. 44-39 11-17 20. 44-39 11-17 21. 44-39 .01 at 11 ply) 11-17
 (5-10 may be better 19. 38-33 11-17 20. 38-33 11-17 21. 38-33 11-17 -0.07 at 11 ply)
19. 27-22 18x27 .22 at 15 ply
 (17x28 !! 20. 34-29 24-29 21. 34-29 23x34 22. 32x23x14 24-29 -1.06 at 14 ply)
20. 32x21 16x27 **21.** 34-29 23x34 **22.** 40x29x20 17-21 **23.** 35-30 12-18 **24.** 30-25 7-12 **25.** 20-15 18-23
 (6-11 ! 26. 45-40 6-11 27. 45-40 6-11 28. 45-40 6-11 .17 at 12 ply)
26. 37-31 26x37 **27.** 42x31x22 **6-11** **28.** 41-37
 (28. 38-32 is interessant 3-9 29. 25-20 3-9 30. 25-20 3-9 31. 25-20 3-9 32. 25-20 3-9 33. 25-20 3-9 34. 25-20 3-9 35. 25-20 3-9 36. 25-20 3-9 37. 25-20 3-9 38. 25-20 29 at 10 ply)
 ... **3-9** **29.** 37-32
 (29. 43-39 !! 12-17 30. 37-32 17x28x37 31. 37-32 12-17 32. 37-32 12-17 33. 37-32 12-17 34. 37-32 12-17 35. 37-32 12-17 36. 37-32 12-17 37. 37-32 12-17 38. 37-32 12-17 39. 37-32 .88 at 11 ply) **11-16**
 (12-18 is better 30. 32-28 12-18 31. 32-28 12-18 32. 32-28 12-18 33. 32-28 12-18 34. 32-28 12-18 35. 32-28 12-18 36. 32-28 12-18 37. 32-28 12-18 38. 32-28 12-18 39. 32-28 12-18 .09 at 13 ply)
30. 48-42 19-24 .18 at 14 ply
 (12-18 ! 31. 25-20 18x27 32. 25-20 21-26 33. 32x21 21-26 .05 at 13 ply)
31. 22-18 13x22 **32.** 32-28 23x32 **33.** 38x27x18x7 2x11 **34.** 25-20 .17 at 10 ply



Analyse huidige stelling

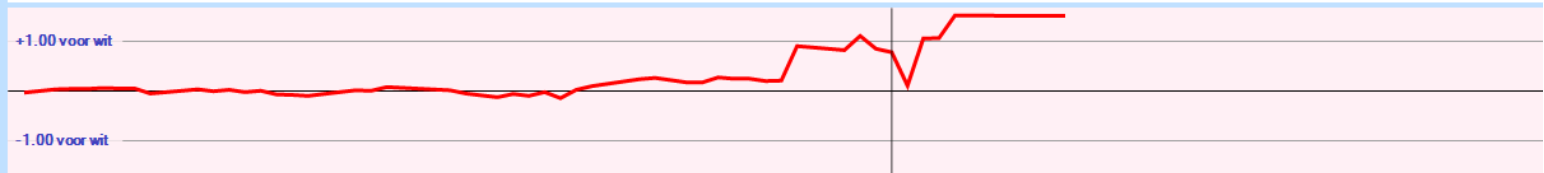
zet	diepte	Score	Zet van tegenstander
25-20	8	1.064	3-9 38-32 12-18 20-14
38-32	8	1.032	23-29 32x23x14 21-26 25-20
41-37	8	0.256	3-9 25-20 12-17 43-39
38-33	7	0.240	3-9 25-20 21-27
45-40	8	0.192	3-9 25-20 12-18 40-34
43-39	8	0.184	3-9 25-20 12-18 41-37
48-42	8	0.176	3-9 25-20 12-18 42-37
49-44	8	0.144	3-9 41-37 12-18 37-31
22-18	7	0.088	13x22 25-20 3-9
36-31	7	0.024	21-27 41-37 27x18
22-17	7	-0.016	11x22 25-20 19-24
15-10	6	-0.696	5x14 43-39 21-26



1. 32-28 19-23 **2.** 28x19 14x23 **3.** 37-32 9-14 **4.** 41-37 14-19 **5.** 33-28 17-22 **6.** 28x17 12x21 **7.** 34-30 20-24 **8.** 47-41 4-9 **9.** 30-25 10-14 **10.** 40-34 14-20 **11.** 25x14 9x20 **12.** 34-30 20-25 **13.** 44-40 25x34 **14.** 40x29x20 15x24 **15.** 39-34 7-12 **16.** 50-44 1-7 **17.** 44-40 21-26 **18.** 31-27
 (18. 32-28 looks better 23x32 19. 44-39 11-17 20. 44-39 11-17 21. 44-39 .01 at 11 ply) 11-17
 (5-10 may be better 19. 38-33 11-17 20. 38-33 11-17 21. 38-33 11-17 -0.07 at 11 ply)
19. 27-22 18x27 **.22 at 15 ply**
 (17x28 !! 20. 34-29 24-29 21. 34-29 23x34 22. 32x23x14 24-29 -1.06 at 14 ply)
20. 32x21 16x27 **21.** 34-29 23x34 **22.** 40x29x20 17-21 **23.** 35-30 12-18 **24.** 30-25 7-12 **25.** 20-15 18-23
 (6-11 ! 26. 45-40 6-11 27. 45-40 6-11 28. 45-40 6-11 .17 at 12 ply)
26. 37-31 26x37 **27.** 42x31x22 6-11 **28.** 41-37
 (28. 38-32 is interessant 3-9 29. 25-20 3-9 30. 25-20 3-9 31. 25-20 3-9 32. 25-20 3-9 33. 25-20 3-9 34. 25-20 3-9 35. 25-20 3-9 36. 25-20 3-9 37. 25-20 3-9 38. 25-20 29 at 10 ply)
 ... **3-9 29. 37-32**
 (29. 43-39 !! 12-17 30. 37-32 17x28x37 31. 37-32 12-17 32. 37-32 12-17 33. 37-32 12-17 34. 37-32 12-17 35. 37-32 12-17 36. 37-32 12-17 37. 37-32 12-17 38. 37-32 12-17
39. 37-32 .88 at 11 ply) **11-16**
 (12-18 is better 30. 32-28 12-18 31. 32-28 12-18 32. 32-28 12-18 33. 32-28 12-18 34. 32-28 12-18 35. 32-28 12-18 36. 32-28 12-18 37. 32-28 12-18 38. 32-28 12-18 39. 32-28 12-18 .09 at 13 ply)
30. 48-42 19-24 **.18 at 14 ply**
 (12-18 ! 31. 25-20 18x27 32. 25-20 21-26 33. 32x21 21-26 .05 at 13 ply)
31. 22-18 13x22 **32.** 32-28 23x32 **33.** 38x27x18x7 2x11 **34.** 25-20 **.17 at 10 ply**

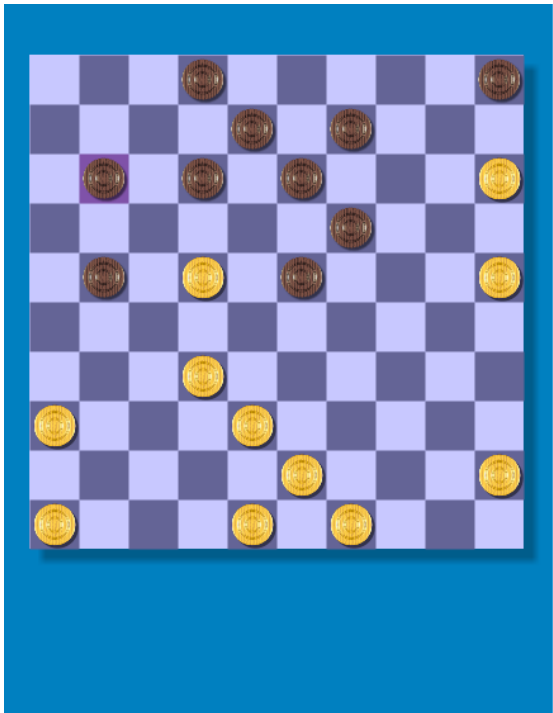
+1.00 voor wit

-1.00 voor wit

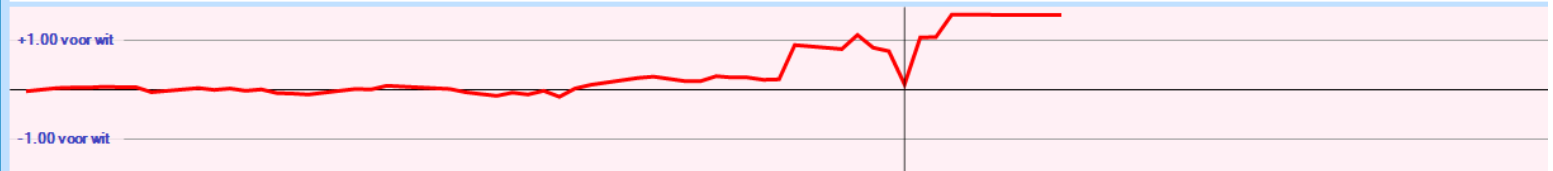


Analyse huidige stelling

zet	diepte	Score	Zet van tegenstander
43-39	8	0.808	12-17 38-33 17x28 33x22
25-20	8	0.280	12-17 38-32 17x28 45-40
45-40	8	0.272	12-17 40-34 17x28 38-32
46-41	8	0.240	12-17 43-39 17x28 39-34
48-42	8	0.160	12-17 25-20 17x28 38-32
49-44	8	0.152	12-17 25-20 17x28 43-39
37-32	8	0.120	12-18 32-28 18x27 45-40
38-32	8	0.104	12-18 43-38 18x27 37-31
37-31	8	0.096	21-27 22-17 11x22 25-20
38-33	8	0.088	23-28 22-18 13x22 25-20
22-18	8	0.040	13x22 46-41 12-18 37-31
36-31	8	0.032	21-27 22-17 11x22 31-26
20-17	8	0.024	11x22 46-41 12-18 38-32

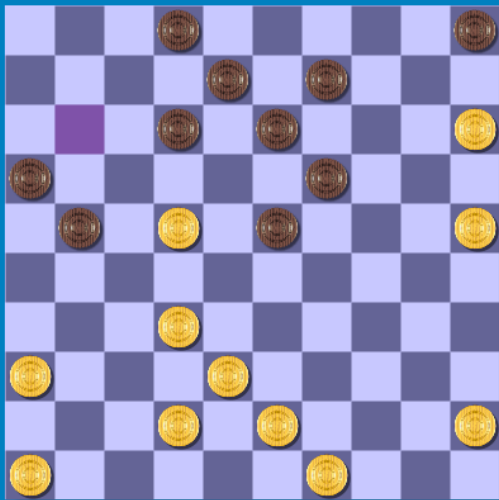


1. 32-28 **19-23** **2.** 28x19 **14x23** **3.** 37-32 **9-14** **4.** 41-37 **14-19** **5.** 33-28 **17-22** **6.** 28x17 **12x21** **7.** 34-30 **20-24** **8.** 47-41 **4-9** **9.** 30-25 **10-14** **10.** 40-34 **14-20** **11.** 25x14 **9x20** **12.** 34-30 **20-25** **13.** 44-40 **25x34** **14.** 40x29x20 **15x24** **15.** 39-34 **7-12** **16.** 50-44 **1-7** **17.** 44-40 **21-26** **18.** 31-27
 (18. 32-28 looks better 23x32 19. 44-39 11-17 20. 44-39 11-17 21. 44-39 .01 at 11 ply) 11-17
 (5-10 may be better 19. 38-33 11-17 20. 38-33 11-17 21. 38-33 11-17 -0.07 at 11 ply)
19. 27-22 **18x27** **.22 at 15 ply**
 (17x28 !! 20. 34-29 24-29 21. 34-29 23x34 22. 32x23x14 24-29 -1.06 at 14 ply)
20. 32x21 **16x27** **21.** 34-29 **23x34** **22.** 40x29x20 **17-21** **23.** 35-30 **12-18** **24.** 30-25 **7-12** **25.** 20-15 **18-23**
 (6-11 ! 26. 45-40 6-11 27. 45-40 6-11 28. 45-40 6-11 .17 at 12 ply)
26. 37-31 **26x37** **27.** 42x31x22 **6-11** **28.** 41-37
 (28. 38-32 is interessant 3-9 29. 25-20 3-9 30. 25-20 3-9 31. 25-20 3-9 32. 25-20 3-9 33. 25-20 3-9 34. 25-20 3-9 35. 25-20 3-9 36. 25-20 3-9 37. 25-20 3-9 38. 25-20 29 at 10 ply)
 ... **3-9** **29.** **37-32**
 (29. 43-39 !! 12-17 30. 37-32 17x28x37 31. 37-32 12-17 32. 37-32 12-17 33. 37-32 12-17 34. 37-32 12-17 35. 37-32 12-17 36. 37-32 12-17 37. 37-32 12-17 38. 37-32 12-17 39. 37-32 .88 at 11 ply) **11-16**
 (12-18 is better 30. 32-28 12-18 31. 32-28 12-18 32. 32-28 12-18 33. 32-28 12-18 34. 32-28 12-18 35. 32-28 12-18 36. 32-28 12-18 37. 32-28 12-18 38. 32-28 12-18 39. 32-28 12-18 .09 at 13 ply)
30. 48-42 **19-24** **.18 at 14 ply**
 (12-18 ! 31. 25-20 18x27 32. 25-20 21-26 33. 32x21 21-26 .05 at 13 ply)
31. 22-18 **13x22** **32.** 32-28 **23x32** **33.** 38x27x18x7 **2x11** **34.** 25-20 **.17 at 10 ply**

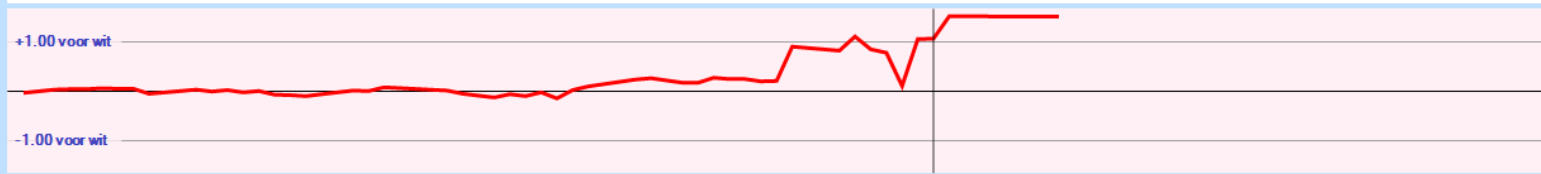


Analyse huidige stelling

zet	diepte	Score	Zet van tegenstander
12-18	8	-0.120	45-40 18x27 36-31 27x36
21-26	7	-0.856	43-39 12-18 32-27
11-16	7	-1.128	32-27 21-26 32-27
2-7	7	-1.200	32-28 21-26 32-27
12-17	7	-1.208	32-28 23x32 38x27x16x7
23-29	7	-1.320	22-18 12x23 42-37
21-27	6	-2.376	32x21 19-24 36-31
11-17	6	-3.632	22x11 12-17 11x22
23-28	5	-4.368	32x23x14x3 12-17
19-24	5	-5.112	32-28 23x32
5-10	5	-5.304	15x4 23-29
13-18	5	-5.864	22x13x4 11-16
0-14	5	-7.856	32-28 23x32



1. 32-28 19-23 2. 28x19 14x23 3. 37-32 9-14 4. 41-37 14-19 5. 33-28 17-22 6. 28x17 12x21 7. 34-30 20-24 8. 47-41 4-9 9. 30-25 10-14 10. 40-34 14-20 11. 25x14 9x20 12. 34-30 20-25 13. 44-40 25x34 14. 40x29x20 15x24 15. 39-34 7-12 16. 50-44 1-7 17. 44-40 21-26 18. 31-27
 (18. 32-28 looks better 23x32 19. 44-39 11-17 20. 44-39 11-17 21. 44-39 .01 at 11 ply) 11-17
 (5-10 may be better 19. 38-33 11-17 20. 38-33 11-17 21. 38-33 11-17 -0.07 at 11 ply)
 19. 27-22 18x27 .22 at 15 ply
 (17x28 !! 20. 34-29 24-29 21. 34-29 23x34 22. 32x23x14 24-29 -1.06 at 14 ply)
 20. 32x21 16x27 21. 34-29 23x34 22. 40x29x20 17-21 23. 35-30 12-18 24. 30-25 7-12 25. 20-15 18-23
 (6-11 ! 26. 45-40 6-11 27. 45-40 6-11 28. 45-40 6-11 .17 at 12 ply)
 26. 37-31 26x37 27. 42x31x22 6-11 28. 41-37
 (28. 38-32 is interessant 3-9 29. 25-20 3-9 30. 25-20 3-9 31. 25-20 3-9 32. 25-20 3-9 33. 25-20 3-9 34. 25-20 3-9 35. 25-20 3-9 36. 25-20 3-9 37. 25-20 3-9 38. 25-20 29 at 10 ply)
 ... 3-9 29. 37-32
 (29. 43-39 !! 12-17 30. 37-32 17x28x37 31. 37-32 12-17 32. 37-32 12-17 33. 37-32 12-17 34. 37-32 12-17 35. 37-32 12-17 36. 37-32 12-17 37. 37-32 12-17 38. 37-32 12-17 39. 37-32 .88 at 11 ply) 11-16
 (12-18 is better 30. 32-28 12-18 31. 32-28 12-18 32. 32-28 12-18 33. 32-28 12-18 34. 32-28 12-18 35. 32-28 12-18 36. 32-28 12-18 37. 32-28 12-18 38. 32-28 12-18 39. 32-28 12-18 .09 at 13 ply)
 30. 48-42 19-24 .18 at 14 ply
 (12-18 ! 31. 25-20 18x27 32. 25-20 21-26 33. 32x21 21-26 .05 at 13 ply)
 31. 22-18 13x22 32. 32-28 23x32 33. 38x27x18x7 2x11 34. 25-20 .17 at 10 ply



Analyse huidige stelling

zet	diepte	Score	Zet van tegenstander
2-7	8	-1.048	25-20 21-26 32-27 7-11
12-18	8	-1.128	32-27 21x32 38x27 8-12
23-29	8	-1.224	25-20 12-18 32-27 21x32
21-26	8	-1.248	22-18 13x22 32-28 23x32
12-17	7	-2.144	22x11 16x7 32-28
19-24	7	-2.200	22-18 13x22 32-28
21-27	7	-2.280	22x31 12-17 31-27
9-14	7	-2.328	15-10 21-27 22x13x24
5-10	5	-5.440	15x4 23-29
13-18	5	-5.712	22x13x4 19-24
23-28	5	-6.568	32x23x14x3 21-26