

Wit: **Toon van Zandvoort**
 Zwart: **Wim van Kasteren**
 Resultaat: **0-3**
 Datum: **2-11-2017**
 Toernooi: **Onderlinge competitie**
 Plek: **De Huif**
 Ronde:



1. 32-28 17-21 2. 37-32 21-26 3. 41-37 18-23 4. 34-29 23x34 5. 39x30 11-17 6. 30-25 12-18 7. 44-39 17-21 8. 50-44 7-12 9. 31-27 19-23 10. 28x19 14x23 11. 25x14 10x19 12. 33-28 1-7 13. 47-41 5-10 14. 35-30 15-20 15. 40-35 10-15 16. 39-33 20-24 17. 30-25 7-11 18. 43-39 15-20 19. 25x14 9x20 20. 49-43 20-25 21. 27-22

?-0.94 at 15 ply

(21. 44-40 is better 11-17 22. 40-34 11-17 23. 40-34 11-17 24. 40-34 -0.06 at 14 ply)

... 18x27 22. 37-31 26x37 23. 42x31x22 12-17

(12-18 || 24. 22-18 12-18 25. 22-18 12-18 26. 22-18 12-18 27. 22-18 12-18 28. 22-18 12-18 29. 22-18 12-18 30. 22-18 12-18 31. 22-18 12-18 32. 22-18 12-18 33. 22-18 12-18

-1.12 at 13 ply) 24. 48-42 ?-5.50 at 14 ply

(24. 41-37 is better 24-30 25. 35x24 19x30 26. 28x19 24-30 27. 33-29 13x24x33x42x31 28. 36x27 17x28x37 29. 33-29 21x32 30. 33-29 -0.15 at 13 ply) 24-29 -3.46 at 11 ply

(24-30 may be better 25. 35x24 19x30 26. 28x19 17x28x37x48 27. 41-37 24-30 28. 41-37 24-30 29. 41-37 24-30 30. 41-37 24-30 31. 41-37 24-30 32. 41-37 24-30 33. 41-37 24-30 34.

41-37 24-30 -5.45 at 10 ply)

25. 33x24 19x30 26. 35x24 4-9 27. 28x19 17x28x37x48 28. 44-40 48-26 29. 39-34

(29. 38-33 is interessant 26x42x33x44x35 30. 37-32 26x42x33x44x35 31. 37-32 26x42x33x44x35 32. 37-32 26x42x33x44x35 33. 37-32 26x42x33x44x35 34. 37-32 26x42x33x44x35 35.

37-32 26x42x33x44x35 36. 37-32 26x42x33x44x35 37. 37-32 26x42x33x44x35 38. 37-32 26x42x33x44x35 39. 37-32 -6.84 at 11 ply)

... 21-27 30. 34-29

(30. 19-14 may be better 9x20x29 31. 34x23 27-31 32. 36x27 27-31 33. 38-33 27-31 34. 38-33 8-12 35. 38-33 27-31 36. 38-33 27-31 37. 38-33 27-31 38. 38-33 27-31 39. 38-33 27-31

40. 38-33 -4.85 at 12 ply) 27-32 -6.66 at 12 ply

(25-30 may be better 31. 24x35 13x24x33x42 32. 19-14 9x20 33. 19-14 20x9 34. 19-14 9x20 35. 19-14 20x9 36. 19-14 9x20 37. 19-14 20x9 38. 19-14 9x20 39. 19-14 20x9 40. 19-14

9x20 -7.05 at 11 ply)

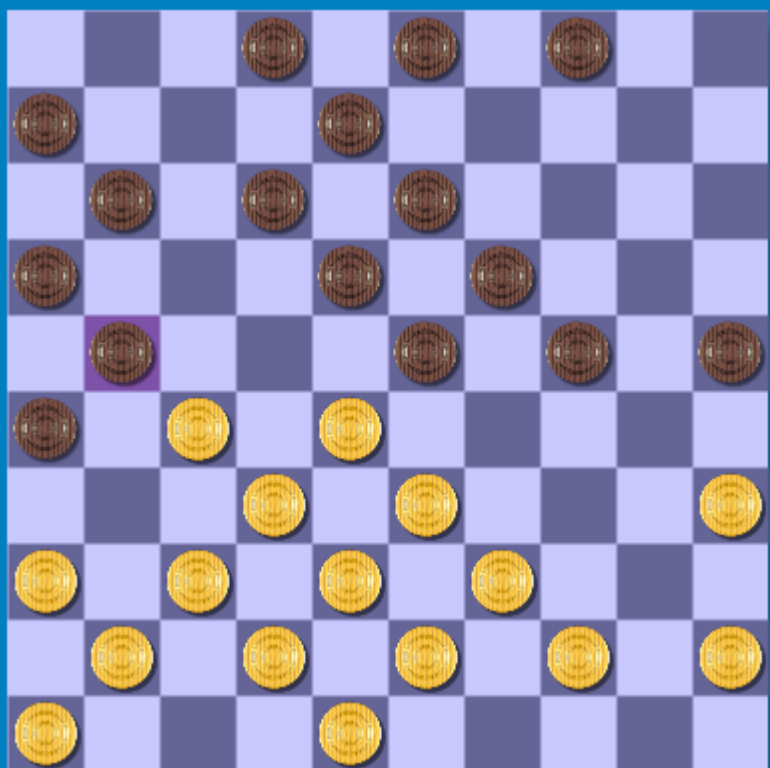
31. 38x27 8-12 32. 19x8x17 26x8x35x49x21x21 -6.94 at 14 ply

+1.00 voor wit

-1.00 voor wit

Analyse huidige stelling

zet	diepte	Score	Zet van tegenstander
41-37	8	-0.104	4-10 44-40 10-15 40-34
44-40	7	-0.992	24-30 35x24 19x30
45-40	7	-1.040	23-29 41-37 13-18
22-18	7	-1.056	23x12 44-40 12-18
33-29	7	-1.344	24x33x42 48x37 8-12
32-27	7	-1.392	23x32 41-37 17x28x39x30



Analyse huidige stelling

zet	diepte	Score	Zet van tegenstander
44-40	8	-0.040	24-30 40-34 4-9 34-30
37-31	8	-0.096	26x37 42x31 21-26 41-37
45-40	8	-0.112	11-17 40-34 18-22 27x18x29x20
28-22	8	-0.152	12-17 33-28 2-7 33x24
36-31	8	-0.200	11-17 44-40 2-7 41-36
27-22	8	-0.960	18x27 44-40 24-30 28-22