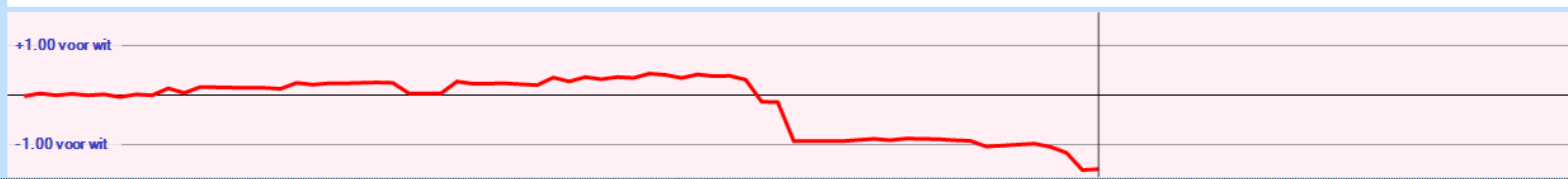


Wit: **Lous van den Oetelaar**
 Zwart: **Wim van Kasteren**
 Resultaat: **0-3**
 Datum: **6-10-2016**
 Toernooi: **Onderlinge competitie**
 Plek:
 Ronde:



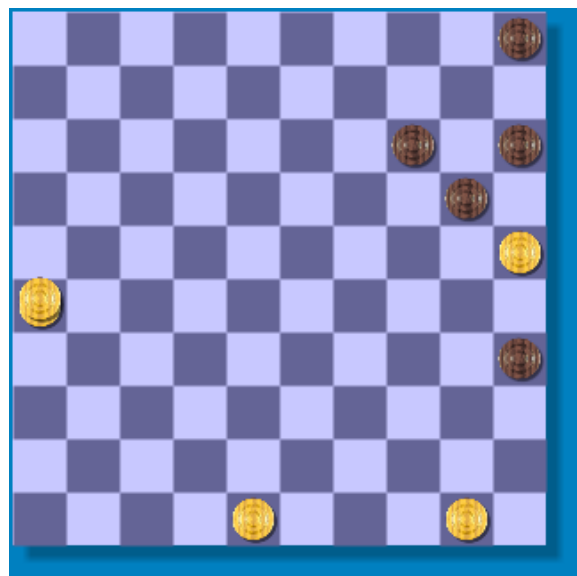
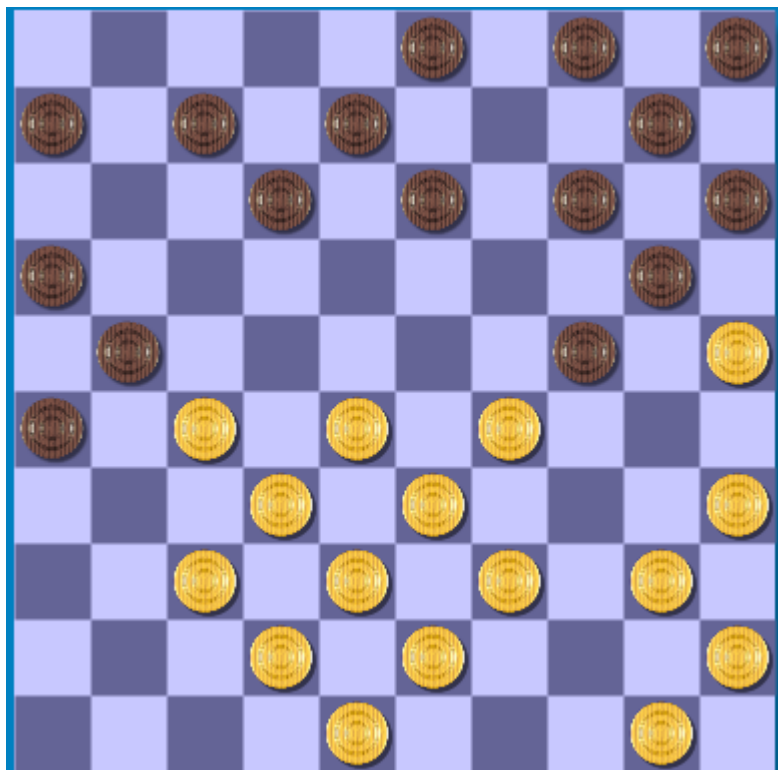
1. 32-28 17-21 2. 37-32 21-26 3. 41-37 11-17 4. 34-30 17-21 5. 30-25 19-24
 (19-23 *may be better* 6. 28x19 21-27 7. 40-34 21-27 8. 40-34 21-27 9. 40-34 21-27 10. 40-34 21-27 11. 40-34 21-27 12. 40-34 21-27 13. 40-34 21-27 14. 40-34 21-27 15. 40-34 21-27 *-0.02 at 10 ply*)
6. 39-34 21-27 7. 31x22 18x27 8. 32x21 26x17 9. 37-32 17-21 10. 46-41 6-11 11. 41-37 21-26 12. 44-39 11-17 13. 34-30
 (13. 34-29 *looks better* 12-18 14. 34-29 12-18 15. 34-29 12-18 16. 34-29 *.23 at 9 ply*)
 ... **17-21 14. 30x19 13x24**
 (14x23 *is interessant* 15. 36-31 21-27 16. 36-31 27x36 17. 36-31 21-27 18. 36-31 27x36 19. 36-31 *.22 at 12 ply*)
15. 39-34 21-27 16. 32x21 26x17 17. 37-32 17-21 18. 36-31 1-6 19. 31-27 7-11 20. 49-44 21-26 21. 44-39 11-17 22. 42-37 17-21 23. 47-42 2-7 24. 27-22
 (24. 34-29 *!* 12-18 25. 34-29 12-18 26. 34-29 12-18 27. 34-29 *.22 at 12 ply*)
 ... **9-13 25. 22-17**
 (25. 34-29 *may be better* 12-18 26. 34-29 18x27 27. 34-29 12-18 28. 34-29 12-18 *-0.82 at 12 ply*)
 ... **21-27 26. 32x21 16x27 27. 37-32 12x21 28. 42-37 27-31 29. 34-29 31x42 30. 48x37 7-11 31. 29-23**
 (31. 50-44 *may be better* 8-12 32. 37-31 26x37 33. 32x41 8-12 34. 37-31 *-0.93 at 10 ply*)
 ... **21-27 32. 32x21 26x17 33. 37-31 11-16 34. 31-26**
 (34. 31-27 *!* 13-18 35. 23x12x21 13-18 36. 31-27 13-18 37. 31-27 13-18 38. 31-27 *-1.12 at 13 ply*)
 ... **8-12**



Analyse huidige stelling

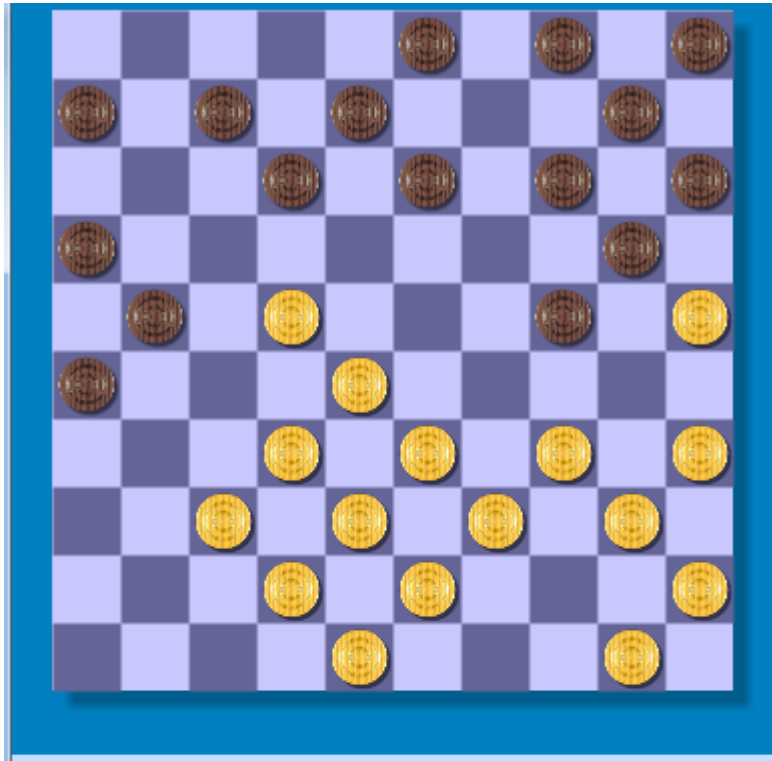
zet	diepte	Score	Zet van tegenstander
23-18	8	-2.064	12x23x32 38x27 24-29 33x24
50-44	8	-2.112	4-9 23-18 12-18 38-32
40-34	8	-2.304	24-29 33x24 20x29x18 34-30
39-34	8	-2.336	24-29 33x24 20x29x18 38-33
28-22	7	-3.240	17x28x19 40-34 24-30
23-19	8	-3.256	14x23x32 25x14 10x19 38x27
26-21	6	-4.512	16x27 40-34 24-29
35-30	6	-4.520	24x35x44 45-40 44x35
38-32	6	-4.520	12-18 43-38 13-19
33-29	5	-5.584	24x33x42 39-34

24^e zet: Lous speelt 27-22, maar 29-23 is beter. Na 9-13 van zwart (stand links is het mogelijk vervolg:



50-44 6-11 35. 44-39) 9-13
 (12-18 25. 34-29 12-18 26. 34-29 12-18 27. 34-29
 .22 at 12 ply)
 25. 29-23 13-19 26. 40-34 7-11 27. 37-31 26x37 28.
 32x41 21x32 29. 38x27 4-9 30. 41-36 8-13 31.
 34-29 11-17 32. 42-38 17-21 33. 48-42 21x32 34.
 38x27 13-18 35. 36-31 3-8 36. 45-40 9-13 37. 31-26
 6-11 38. 40-34 24-30 39. 35x24 19x30 40. 23-19
 14x23x32x21 41. 26x17x6 10-14 42. 33-28 30-35 43.
 42-38 18-22 44. 28x17 12x21 45. 29-23 13-19 46.
 6-1 19x28 47. 1-29 28-32 48. 38x27 21x32 49.
 43-38 32x43 50. 39x48 8-13 51. 29-38 13-19 52.
 34-29 19-24 53. 38-33 16-21 54. 33-44 24x33 55.
 44x17x26

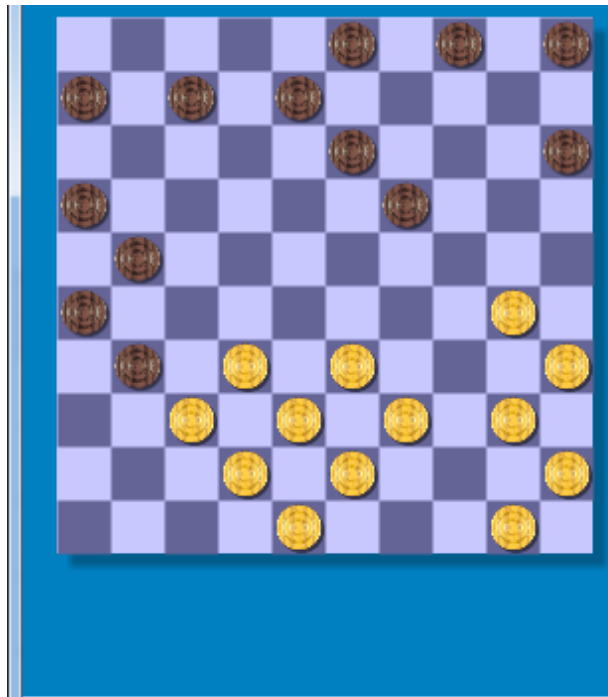
25^e zet wit: Lous speelt 22-17



Analyse huidige stelling

zet	diepte	Score	Zet van tegenstander
34-29	8	-0.112	12-18 29-23 18x27 23-19
22-18	8	-0.192	13x22 28x17 24-30 35x24
37-31	7	-0.800	26x37 32x41 12-18
50-44	7	-0.816	12-18 22-17 21x12
22-17	7	-0.896	21-27 32x21 16x27
34-30	7	-1.056	12-18 30x19 13x24
33-29	6	-1.928	24x33x44 50x39 7-11
28-23	6	-2.368	24-29 33x24 20x29x18x27
35-30	6	-3.056	24x35x44 45-40 44x35
32-27	5	-4.408	21x32x41 34-29

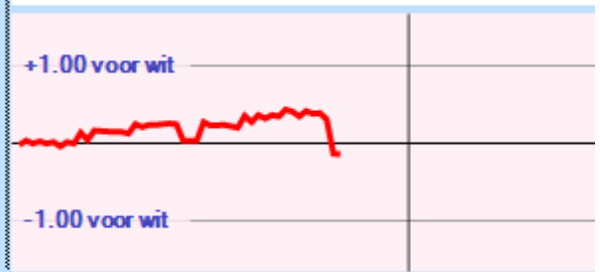
34-29 is beter. Er ontstaat een gelijkwaardige stand na 12-18 en 29-23



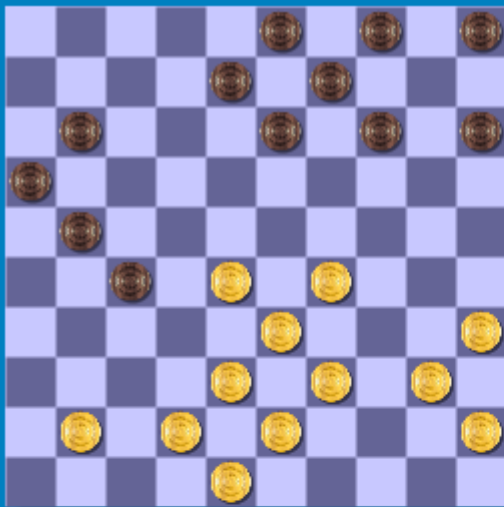
Analyse huidige stelling

zet	diepte	Score	Zet van tegenstander
40-34	8	-0.080	5-10 33-29 4-9 32-28
32-28	8	-0.088	7-12 30-24 19x30 35x24
33-29	8	-0.096	31-36 40-34 3-9 30-24
50-44	8	-0.112	7-12 40-34 5-10 33-29
30-25	8	-0.128	31-36 40-34 19-23 45-40
39-34	8	-0.136	4-9 34-29 19-23 29x18
30-24	8	-0.152	19x30 35x24 31-36 40-34
33-28	8	-0.232	31-36 30-25 13-18 37-31
32-27	7	-1.160	21x32x41 42-37 41x32

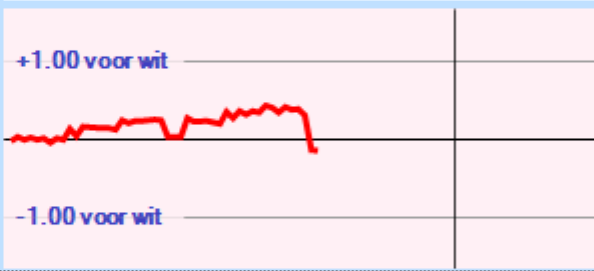
17. 20x11 10x15 18. 37 31 3 12 19. 33 33
 15-20 50. 33-28 20-24 51. 31-27 21-26 52.
 35-30 24x35 53. 27-22 23-29 54. 22-18 12
 55. 28-22 26-31 56. 32-28 23x32 57. 50-44
 31-37 58. 44-39 37-42 59. 22-18 42-48)
 ... 12-18 26. 29-23
 (26. 34-29 18x27 27. 34-29 12-18 28.
 34-29 12-18 -0.82 at 12 ply)
 ... 18x27 27. 23-19 14x23 28. 28x19x30
 27-31 29. 25x14 10x19



Op de 26^e zet ontstaat bij een slag naar 29 i.p.v. naar 27 deze gelijkwaardige stand.



32-28 23x32 57. 50-44 31-37 58. 44-39
 37-42 59. 22-18 42-48)
 ... 12-18 26. 29-23
 (26. 34-29 18x27 27. 34-29 12-18 28.
 34-29 12-18 -0.82 at 12 ply) 18x29
 (18x27 27. 23-19 14x23 28. 28x19x30
 27-31 29. 25x14 10x19)
 27. 39-34 14-19 28. 34x23x14 20x9 29.
 37-31 26x37 30. 32x41 7-12 31. 22-17
 21-27 32. 25-20 12x21 33. 20x29 10-14
 34. 50-44 6-11 35. 44-39



Analyse huidige stelling

zet	diepte	Score	Zet van tegenstander
8-12	8	-0.024	35-30 13-18 39-34 18x29
21-26	8	-0.024	40-34 11-17 35-30 11-17
11-17	8	-0.024	40-34 21-26 35-30 17-21
5-10	8	-0.024	35-30 11-17 40-34 21-26
14-20	8	-0.032	35-30 20-24 30x19 13x24
4-10	8	-0.056	35-30 8-12 40-34 27-31
15-20	8	-0.056	35-30 20-25 28-23 21-26
27-31	8	-0.120	42-37 31x42 48x37 11-17
13-18	7	-1.040	28-22 9-13 22x31
14-19	7	-1.128	28-23 19-24 29x20
27-32	7	-1.168	28x37 15-20 37-32
13-19	6	-2.200	28-22 27x18 29-23

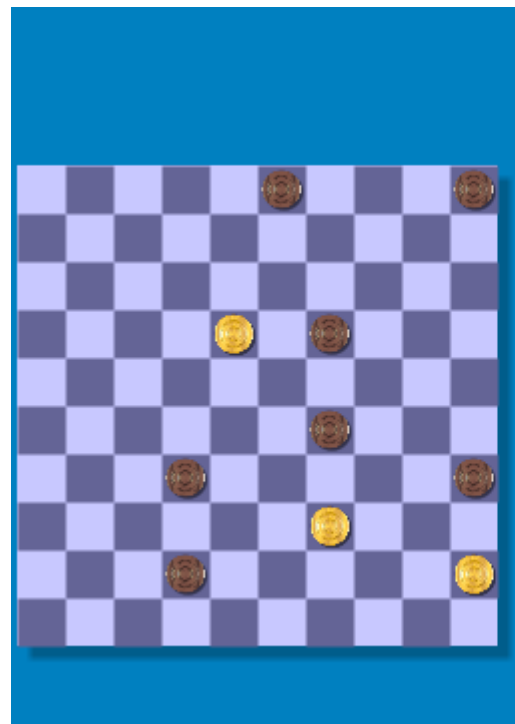
34^e zet wit: Lous speelt 31-26, maar 31-27 is beter



Analyse huidige stelling

zet	diepte	Score	Zet van tegenstander
31-27	8	-0.952	4-9 38-32 14-19 25x14
31-26	7	-2.120	6-11 23x34 6-11
23-19	7	-2.240	14x23x32 25x14 10x19
23-18	7	-2.280	13x22 40-34
50-44	7	-2.496	13-18 23x12x21 16x27x36
40-34	6	-2.648	24-30 23-18 13x22
39-34	6	-2.928	17-22 34-29 8-12
28-22	6	-3.168	17x28x19 38-32 13-18
35-30	6	-4.200	24x35x44 45-40 44x35
38-32	6	-4.376	13-18 31-27 13-19
33-29	5	-5.472	24x33x42 31-27

Het zou niet helpen. Bij het beste spel voor beide partijen volgt:



11-16 34. 31-27 !
 (34. 31-26 8-12) 4-9
 (13-18 35. 23x12x21 13-18 36.
 31-27 13-18 37. 31-27 13-18 38. 31-27
 -1.12 at 13 ply)
 35. 38-32 13-19 36. 27-22 9-13 37.
 22x11 6x17 38. 32-27 17-21 39. 40-34
 21x32 40. 28x37 19x28 41. 33x22
 16-21 42. 43-38 13-19 43. 34-30 8-13
 44. 38-32 13-18 45. 22x13 19x8 46.
 30x19 14x23 47. 25x14 10x19 48.
 37-31 8-12 49. 39-33 15-20 50. 33-28
 20-24 51. 31-27 21-26 52. 35-30 24x35
 53. 27-22 23-29 54. 22-18 12x23 55.
 28-22 26-31 56. 32-28 23x32 57. 50-44
 31-37 58. 44-39 37-42 59. 22-18 42-48

