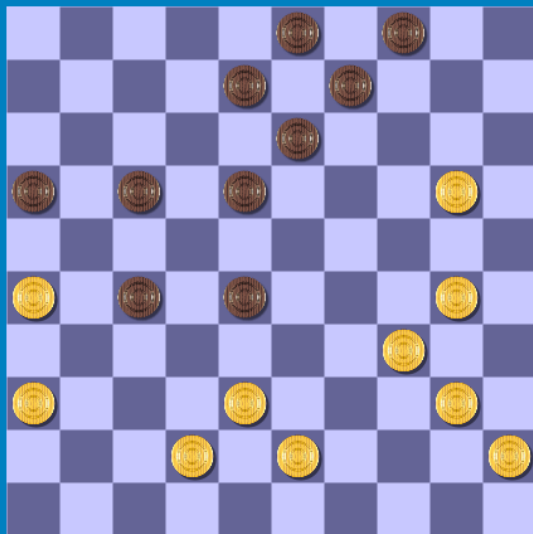


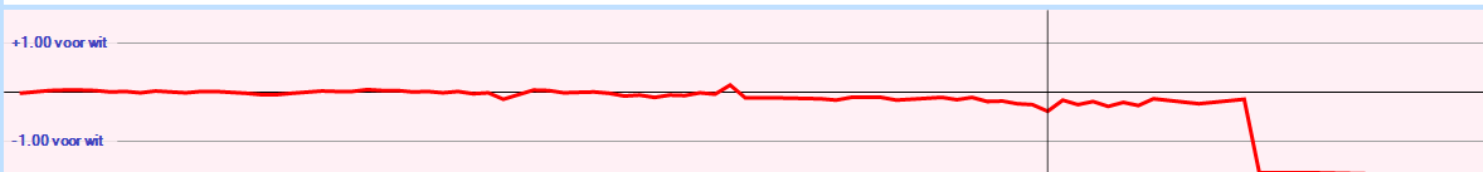
Wit: **Jos van der Wielen**
 Zwart: **Lous van den Oetelaar**
 Resultaat: *****
 Datum: **12-10-2017**
 Toernooi: **Bekercompetitie**
 Plek: **De Huif**
 Ronde: **?**



1. 32-28 19-23 2. 28x19 14x23 3. 37-32 10-14 4. 41-37 14-19 5. 46-41 5-10 6. 35-30 10-14 7. 30-25 17-21 8. 32-28 23x32 9. 37x28 21-26 10. 41-37 18-22
 11. 28x17 12x21 12. 38-32 13-18 13. 43-38 9-13 14. 49-43 4-9 15. 34-29 7-12 16. 40-34 1-7 17. 44-40
 (17. 47-41 looks better 11-17 18. 45-40 11-17 19. 45-40 11-17 20. 45-40 .01 at 10 ply) 18-23 .04 at 12 ply
 (18-22 may be better 18. 29-23 19x28 19. 32x23 17-22 20. 29-23 17-22 -0.08 at 11 ply)
 18. 29x18 12x23 19. 40-35 7-12 20. 50-44 12-18 21. 34-30 8-12 22. 44-40 2-8 23. 39-34 11-17 24. 33-28 20-24 25. 31-27
 (25. 47-41 ! 17-22 26. 28x17 17-22 27. 31-27 22x31 28. 36x27 17-22 29. 31-27 22x31 30. 31-27 17-22 31. 31-27 22x31 32. 31-27 17-22 33. 31-27 22x31 34. 31-27
 17-22 35. 31-27 .18 at 13 ply)
 ... 17-22 26. 28x17 23-28 27. 32x23 21x32x41 28. 36-31 12x21 29. 47x36 26x37 30. 42x31 19x28 31. 30x19x10 15x4 32. 31-26 21-27 33. 48-42 6-11 34. 25-20
 11-17 35. 35-30
 (35. 34-30 is better 18-23 36. 34-30 18-23 37. 34-30 17-22 38. 34-30 -0.18 at 13 ply) 8-12
 (17-21 may be better 36. 26x17 9-14 37. 20x9 3x14 38. 20-15 9-14 -0.14 at 13 ply)
 36. 30-25 13-19 37. 34-30 18-23 38. 40-34 3-8 39. 34-29 23x34 40. 30x39 17-21 41. 26x17 12x21 42. 45-40
 (42. 39-34 is better 19-24 43. 20x29 19-24 44. 29x20 19-24 45. 20x29 -0.14 at 13 ply)
 ... 19-24 43. 20x29 28-33 44. 39x28 27-31 45. 36x27 21x32x23x34x45 -4.36 at 11 ply

+1.00 voor wit

-1.00 voor wit



Analyse huidige stelling

zet	diepte	Score	Zet van tegenstander
17-21	8	1.112	26x17 8-12 17x8x19 9-14
13-19	8	0.192	40-35 8-12 43-39 19-23
9-14	8	0.168	20x9 3x14 43-39 13-19
18-23	8	0.160	30-25 13-18 34-29 23x34
17-22	8	0.160	40-35 16-21 26x17 22x11
16-21	8	0.088	20-14 9x20 30-24 20x29
27-32	8	0.064	38x27 17-21 26x17 8-12
28-33	8	0.056	38x29 17-21 26x17 8-12
8-12	8	0.024	20-14 9x20 30-24 27x36

Lous speelde hier 8-12. Ook hier zat een mooie ruilmogelijkheid!

17-21 26x17
 8-12 17x19
 9-14 20x9
 4x44 43-39
 44x33 38x29