

Analyse met DragonDammen

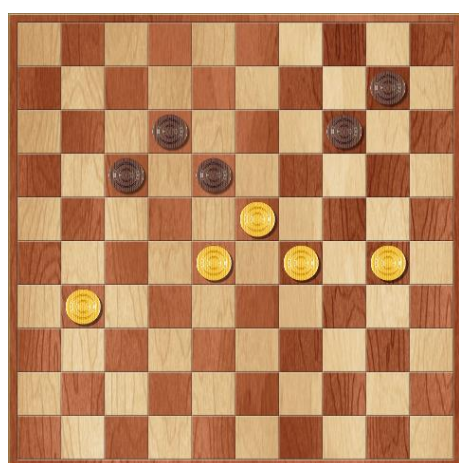
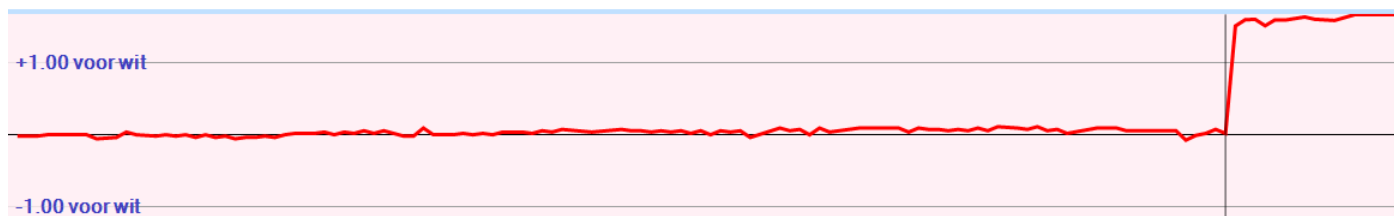
1. 32-28 19-23 2. 28x19 14x23 3. 37-32 10-14 4. 34-30 14-19 5. 30-25  
17-21 6. 25x14 19x10 7. 31-26 10-14 8. 26x17 12x21 9. 41-37 5-10 10.  
35-30 7-12 11. 30-25 11-17 12. 46-41 21-26 13. 40-34 1-7 14. 45-40 17-21  
15. 50-45 21-27 16. 32x21 26x17 17. 37-32 7-11 18. 41-37 16-21 19. 47-41  
21-26 20. 34-29 23x34 21. 40x29 17-22 22. 32-28 14-19 23. 28x17 11x22  
24. 37-32 10-14 25. 41-37 19-23 26. 44-40 23x34 27. 40x29 12-17 28.  
32-28 14-19 29. 29-24 19x30 30. 25x34 17-21 31. 28x17 21x12 32. 33-28  
9-14 33. 39-33 14-19 34. 49-44 15-20 35. 34-29 19-24 36. 43-39 6-11 37.  
37-32 11-16 38. 39-34 20-25 39. 29x20 25x14 40. 34-29 3-9 41. 42-37  
16-21 42. 44-39 21-27 43. 32x21 26x17 44. 45-40 17-22 45. 28x17 12x21  
46. 37-32 21-26 47. 32-28 8-12 48. 48-42 2-8 49. 42-37 12-17 50. 39-34  
17-21 51. 29-23 18x29 52. 34x23 8-12 53. 37-32 12-17 54. 40-34 13-18 55.  
23x12 17x8 56. 28-23 9-13 57. 33-28 8-12 58. 38-33 21-27 59. 32x21 26x17  
60. 34-30 13-18 61. 33-29 4-10 62. 36-31 10-15

( 17-21 is better 63. 31-27 21x32 64. 28x37 18-22 65. 29-24 12-17 66. 30-25  
+0.02 at 28 ply )

63. 31-27 14-20 64. 30-24 20-25 65. 23-19 15-20 66. 24x15 25-30 67. 19-13  
+2.68 at 24 ply

( 67. 19-14 may be better 30-35 68. 14-9 17-21 69. 27x16 35-40 70. 9-4 40-44 71.  
4x22 12-17 72. 22x6 44-49 73. 15-10 49-38 74. 29-23 38-49 75. 23-19 49-38 76.  
10-4 38-29 77. 4-22 and white wins +30.00 at 23 ply )

... 18x9 68. 29-24 30x19 69. 15-10 12-18 70. 10-4 18-22 71. 4x13x24 22x31  
72. 24-19 black loses the game (43 ply)



De foutzet van Rob; hij speelt 62. ... 10-15

Mogelijke zetten zijn op dit moment nog:

62. ... 18-22 63. 30-24 22x33 64. 29x38 10-15 65. 31-27 14-20 66. 24-19 20-25 67. 19-14 25-30 68. 23-19 30-35 69. 38-33 12-18 70. 33-29 17-22 71. 27-21 22-28 72. 21-17 18-22 73. 17-12 22-27 74. 12-8 27-32 75. 8-3 15-20 76. 14x25 32-38 77. 19-14 38-43 78. 14-10 28-32 79. 10-5 32-38 80. 3-26 43-49 81. 5-10 35-40 82. 25-20 38-43 83. 26-48 40-45 84. 48x39 45-50 85. 39-6 49-44 86. 10-15

En

62. ... 17-21 63. 31-26 14-20 64. 26x8 20-25 65. 23x12 25x32 66. 8-3 10-15 67. 12-8 32-38 68. 8-2 38-42 69. 2-8 42-48

Uiteraard zijn er tussendoor andere remisevarianten mogelijk, maar steeds zijn de beste zetten voor beide spelers gehanteerd met volgens Kingsrow de meest gespeelde zet.

## Analyse met Kingsrow

[Event ""]

[Date "2023.06.22"]

[White "Ad Rovers"]

[Black "Rob Pijnenburg"]

[Result "\*"]

1. 32-28 {34-29(0/28)\* 34-30(0/29)\* 31-27(0/31)? 32-27(0/31)? 31-26(0/28)? 32-28(0/26)? 33-29(2/26)? 33-28(2/26)? 35-30(6/26)?}  
19-23 {17-21(0/25)\* 17-22(0/28)\* 20-25(0/25)? 18-23(0/25)? 19-23(0/24)? 16-21(-2/27)? 18-22(-2/27)? 19-24(-2/24)? 20-24(-2/24)?}
2. 28x19 {28x19(0/23)\*}  
14x23 {14x23(0/22)\* 13x24(-4/16)?}
3. 37-32 {34-29(0/21)\* 37-32(0/21)\* 34-30(0/20)? 31-27(0/18)? 31-26(0/16)? 33-28(2/17)? 35-30(4/13)? 33-29(4/11)? 38-32(6/9)?}  
10-14 {10-14(0/20)\* 17-21(-2/17)? 20-25(-2/16)? 9-14(-2/13)? 17-22(-4/15)? 13-19(-4/12)? 18-22(-6/15)? 20-24(-6/14)?}
4. 34-30 {41-37(0/19)\* 34-29(0/19)\* 34-30(0/18)? 31-27(0/15)? 31-26(2/13)? 35-30(4/11)? 32-27(4/11)? 33-29(4/9)? 33-28(4/9)? 42-37(4/9)? 32-28(10/3)?}  
14-19 {14-19(0/17)\* 17-21(0/17)\* 5-10(-2/11)? 4-10(-2/10)? 13-19(-4/11)? 23-29(-8/4)?}
5. 30-25 {30-25(0/16)\* 41-37(0/12)? 31-27(2/12)? 40-34(4/13)? 31-26(4/8)? 39-34(4/6)? 33-28(6/6)? 42-37(6/5)? 32-27(6/4)?}  
17-21 {17-21(0/15)\* 17-22(-2/12)? 18-22(-6/9)? 9-14(-6/7)? 20-24(-6/4)? 4-10(-6/3)? 19-24(-6/3)?}
6. 25x14 {25x14(0/14)\*}  
19x10 {9x20(0/13)\* 19x10(0/7)?}
7. 31-26 {41-37(0/7)\* 33-29(0/6)\* 42-37(0/10)? 40-34(0/8)? 35-30(0/8)? 31-27(0/7)? 39-34(0/7)? 31-26(0/6)? 32-27(4/4)?}  
10-14 {15-20(0/5)\*}
8. 26x17 {diepte 7, 0.0 sec, 26x17,-6 hv 26x17 12x21 40-34 13-19 45-40 21-27 32x21 16x27}  
12x21 {diepte 20, 3.8 sec, 12x21,-2 11x22,-96 hv 12x21 41-37 5-10 46-41 11-17 36-31 21-26 41-36 17-21 40-34 6-11}
9. 41-37 {diepte 17, 3.3 sec, 41-37,-2 33-28,-2 36-31,-2 40-34,0 39-34,0 35-30,0 42-37,0 33-29,2 32-27,2 32-28,16 hv 41-37 7-12 36-31 5-10 40-34 11-17 46-41 6-11 33-28 1-6 28x19}  
5-10 {diepte 17, 4.9 sec, 21-27,0 7-12,-2 5-10,-2 11-17,-2 21-26,-4 14-19,-4 8-12,-4 4-10,-4 15-20,-6 13-19,-6 14-20,-6 23-29,-94 18-22,-100 23-28,-104 hv 21-27 32x21 16x27 46-41 11-17 37-31 6-11 31x22 18x27 41-37 7-12}
10. 35-30 {46-41(0/0)\*}  
7-12 {diepte 17, 4.4 sec, 11-17,0 21-27,-2 8-12,-2 7-12,-2 21-26,-2 14-19,-2 15-20,-4 14-20,-4 13-19,-6 18-22,-8 23-29,-94 23-28,-102 hv 11-17 46-41 7-12 36-31 6-11 40-34 21-27 31x22 18x27 32x21 17x26}
11. 30-25 {diepte 17, 3.3 sec, 36-31,-2 30-25,-2 40-34,0 39-34,0 46-41,0 47-41,0 37-31,0 40-35,0 30-24,52 33-28,94 32-28,100 32-27,100 33-29,196 hv 36-31 11-17 31-26 21-27 32x21 16x27 30-25 6-11 33-29 23x34 40x29}  
11-17 {diepte 17, 4.0 sec, 11-17,-2 1-7,-2 21-27,-2 2-7,-2 21-26,-4 14-19,-4 12-17,-4 13-19,-4 15-20,-6 23-29,-96 18-22,-100 23-28,-102 14-20,-298 hv 11-17 46-41 6-11 32-27 21x32 37x19 14x23 42-37 10-14 48-42 4-10}
12. 46-41 {diepte 18, 5.3 sec, 36-31,-2 46-41,-2 40-34,0 33-29,0 39-34,0 47-41,0 40-35,0 37-31,0 33-28,2 25-20,94 32-27,98 32-28,100 hv 36-31 21-26 46-41 6-11 40-34 17-22 33-28 22x33 39x19 14x23 45-40}  
21-26 {diepte 17, 3.4 sec, 6-11,0 21-27,0 14-19,-2 2-7,-2 1-7,-4 21-26,-4 13-19,-4 15-20,-22 23-29,-96 23-28,-100 18-22,-102 17-22,-202 14-20,-298 hv 6-11 40-34 21-27 32x21 16x27 44-40 14-19 34-29 23x34 40x29 19-23}
13. 40-34 {diepte 18, 5.0 sec, 40-34,-4 39-34,-4 36-31,-4 33-29,-2 32-27,0 33-28,0 40-35,0 32-28,0 25-20,92 37-31,202 hv 40-34 17-21 45-40 6-11 36-31 1-6 41-36 21-27 32x21 26x17 38-32}  
1-7 {diepte 17, 4.6 sec, 17-21,-4 6-11,-4 1-7,-4 15-20,-4 13-19,-4 14-19,-6 17-22,-6 2-7,-6 16-21,-92 23-29,-98 18-22,-100 23-28,-102 26-31,-104 14-20,-298 hv 17-21 45-40 6-11 36-31 11-17 33-28 1-7 28x19 14x23 38-33 13-19}
14. 45-40 {diepte 18, 5.1 sec, 45-40,-4 36-31,-4 44-40,-4 33-28,-2 32-27,0 34-29,0 34-30,0 33-29,0 32-28,0 25-20,94 37-31,198 hv 45-40 17-21 50-45 12-17 36-31 17-22 33-28 22x33 39x19 14x23 31-27}

17-21 {diepte 17, 4.1 sec, 17-21,-4 7-11,-4 17-22,-4 15-20,-4 14-19,-6 13-19,-6 18-22,-6 6-11,-8 16-21,-92 23-29,-98 23-28,-102 26-31,-104 14-20,-300 hv 17-21 36-31 15-20 50-45 13-19 41-36 9-13 31-27 12-17 34-29 23x34}  
15. 50-45 {diepte 18, 5.4 sec, 36-31,-4 50-45,-2 32-27,0 40-35,0 33-29,0 34-30,0 33-28,2 32-28,2 25-20,88 34-29,178 37-31,290 hv 36-31 15-20 31-27 20-24 33-28 13-19 40-35 8-13 39-33 10-15 44-39}  
21-27 {diepte 18, 4.7 sec, 21-27,-2 7-11,-4 12-17,-4 14-19,-4 13-19,-6 6-11,-8 15-20,-30 18-22,-96 23-28,-96 23-29,-98 26-31,-104 14-20,-300 hv 21-27 32x21 16x27 33-28 23x32 37x28 13-19 40-35 18-23 42-37 23x32}  
16. 32x21 {diepte 7, 0.0 sec, 32x21,-2 hv 32x21 26x17 37-32 14-19 36-31 10-14 42-37}  
26x17 {diepte 20, 3.5 sec, 16x27,-2 26x17,-4 hv 16x27 33-28 23x32 37x28 13-19 39-33 9-13 34-29 19-23 28x19 14x34}  
17. 37-32 {diepte 18, 6.0 sec, 37-32,-4 37-31,-4 36-31,-4 34-30,-4 34-29,-2 38-32,0 33-29,0 33-28,0 40-35,0 25-20,92 hv 37-32 14-19 36-31 10-14 41-36 7-11 42-37 16-21 34-29 23x34 40x29}  
7-11 {diepte 17, 3.5 sec, 17-21,-4 14-19,-4 7-11,-6 15-20,-6 17-22,-6 6-11,-6 13-19,-6 16-21,-92 23-29,-96 18-22,-98 23-28,-102 14-20,-296 hv 17-21 36-31 21-26 31-27 7-11 41-37 11-17 33-28 17-21 28x19 13x24}  
18. 41-37 {diepte 18, 4.6 sec, 36-31,-6 42-37,-4 34-29,-4 41-37,-4 32-27,-2 33-28,-2 33-29,-2 40-35,0 32-28,0 25-20,94 34-30,188 hv 36-31 14-19 34-29 23x34 40x29 10-14 41-37 17-21 29-24 19x30 25x34}  
16-21 {diepte 18, 5.2 sec, 16-21,-4 14-19,-4 17-21,-6 2-7,-6 15-20,-6 13-19,-6 17-22,-10 23-28,-100 23-29,-104 18-22,-210 14-20,-296 hv 16-21 34-29 23x34 40x29 17-22 32-28 21-26 28x17 11x22 45-40 14-19}  
19. 47-41 {diepte 19, 5.6 sec, 34-29,-4 36-31,-2 47-41,-2 34-30,0 33-29,0 40-35,0 33-28,0 37-31,2 25-20,96 32-28,106 32-27,210 hv 34-29 23x34 40x29 21-26 45-40 14-19 32-28 19-24 29x20 15x24 37-31}  
21-26 {diepte 18, 4.2 sec, 21-26,-2 21-27,-2 11-16,-6 14-19,-94 15-20,-96 13-19,-96 23-29,-98 23-28,-98 2-7,-100 17-22,-194 14-20,-294 18-22,-392 hv 21-26 34-29 23x34 40x29 14-19 45-40 10-14 36-31 17-22 41-36 22-27}  
20. 34-29 {diepte 19, 4.3 sec, 34-29,-2 36-31,0 34-30,0 33-29,0 33-28,0 32-27,2 40-35,2 32-28,4 25-20,96 37-31,292 hv 34-29 23x34 40x29 17-22 45-40 22-27 32x21 26x17 37-32 14-19 29-24}  
23x34 {diepte 7, 0.0 sec, 23x34,0 hv 23x34 40x29 17-22 39-34 22-27 32x21 26x17 44-39}  
21. 40x29 {diepte 21, 5.4 sec, 40x29,-2 39x30,0 hv 40x29 17-22 45-40 14-19 36-31 9-14 41-36 3-9 29-24 19x30 25x34}  
17-22 {diepte 18, 4.4 sec, 13-19,-2 14-19,-4 17-22,-4 17-21,-4 2-7,-4 11-16,-6 18-22,-6 15-20,-86 26-31,-100 18-23,-292 14-20,-390 hv 13-19 36-31 15-20 41-36 10-15 29-23 19x28 33x13 9x18 39-33 4-9}  
22. 32-28 {diepte 18, 3.9 sec, 45-40,-2 36-31,-2 32-28,-2 44-40,0 32-27,0 39-34,0 29-24,0 29-23,4 25-20,98 33-28,194 37-31,292 hv 45-40 14-19 36-31 9-14 41-36 4-9 40-35 19-23 39-34 15-20 34-30}  
14-19 {diepte 19, 5.4 sec, 14-19,0 13-19,-2 2-7,-2 11-16,-2 12-17,-4 11-17,-6 22-27,-62 15-20,-78 26-31,-100 18-23,-294 14-20,-380 hv 14-19 28x17 11x22 29-24 19x30 25x34 10-14 37-32 6-11 41-37 11-16}  
23. 28x17 {diepte 7, 0.0 sec, 28x17,2 hv 28x17 11x22 45-40 6-11 29-24 19x30 25x34 11-16}  
11x22 {diepte 21, 3.9 sec, 11x22,0 12x21,-2 hv 11x22 29-24 19x30 25x34 10-14 45-40 6-11 33-28 22x33 39x28 11-16}  
24. 37-32 {diepte 19, 5.3 sec, 29-24,0 45-40,0 37-32,0 38-32,2 44-40,4 39-34,4 25-20,12 29-23,106 36-31,188 33-28,192 37-31,292 hv 29-24 19x30 25x34 22-28 33x22 18x27 39-33 13-18 45-40 18-22 43-39}  
10-14 {diepte 19, 5.0 sec, 10-14,0 6-11,0 19-24,0 19-23,0 2-7,0 26-31,-2 9-14,-2 22-27,-2 12-17,-2 18-23,-166 15-20,-286 22-28,-476 hv 10-14 29-24 19x30 25x34 6-11 33-28 22x33 39x28 14-19 45-40 15-20}  
25. 41-37 {diepte 19, 5.9 sec, 29-24,0 32-28,0 41-37,0 45-40,0 39-34,2 44-40,4 42-37,4 32-27,8 25-20,98 33-28,192 36-31,294 29-23,486 hv 29-24 19x30 25x34 6-11 45-40 14-19 33-28 22x33 39x28 11-16 41-37}  
19-23 {diepte 19, 5.8 sec, 6-11,0 19-23,0 22-27,0 4-10,0 2-7,-2 12-17,-2 22-28,-18 15-20,-76 19-24,-78 26-31,-100 14-20,-188 18-23,-192 hv 6-11 29-24 19x30 25x34 14-19 33-28 22x33 39x28 11-16 45-40 15-20}  
26. 44-40 {diepte 19, 4.0 sec, 44-40,0 32-27,6 36-31,8 39-34,8 29-24,94 32-28,96 25-20,182 37-31,188 45-40,192 33-28,194 hv 44-40 23x34 40x29 22-27 32x21 26x17 45-40 14-20 25x14 9x20 39-34}  
23x34 {diepte 7, 0.0 sec, 23x34,-2 hv 23x34 40x29 22-27 32x21 26x17 45-40 6-11 40-34}  
27. 40x29 {diepte 21, 3.4 sec, 40x29,0 39x30,0 hv 40x29 22-27 32x21 26x17 45-40 6-11 38-32 14-20 25x14 9x20 43-38}  
12-17 {diepte 18, 4.0 sec, 22-27,0 6-11,0 2-7,0 13-19,-2 4-10,-2 14-19,-2 14-20,-2 12-17,-4 15-20,-78 22-28,-88 26-31,-98 18-23,-192 hv 22-27 32x21 26x17 45-40 14-20 25x14 9x20 39-34 13-19 43-39 19-24}  
28. 32-28 {diepte 19, 5.0 sec, 49-44,-4 45-40,-2 32-28,-2 39-34,-2 29-24,30 36-31,34 29-23,92 25-20,94 32-27,136 37-31,188 33-28,192 hv 49-44 17-21 45-40 6-11 32-28 11-16 28x17 21x12 38-32 12-17 43-38}

14-19 {diepte 18, 5.1 sec, 17-21,-2 13-19,-4 14-19,-4 14-20,-8 6-11,-10 4-10,-12 8-12,-14 2-7,-16 15-20,-78 22-27,-94 26-31,-98 18-23,-202 hv 17-21 28x17 21x12 45-40 13-19 29-24 19x30 25x34 6-11 33-28 8-13}

29. 29-24 {diepte 19, 4.9 sec, 38-32,-4 45-40,-4 37-31,-2 49-44,-2 29-24,-2 39-34,0 36-31,0 37-32,2 28-23,12 25-20,90 29-23,90 hv 38-32 17-21 28x17 21x12 45-40 6-11 40-35 19-23 49-44 23x34 39x30}

19x30 {diepte 7, 0.0 sec, 19x30,-4 hv 19x30 25x34 17-21 28x17 21x12 45-40 6-11 49-44 9-14}

30. 25x34 {diepte 7, 0.0 sec, 25x34,-4 hv 25x34 17-21 28x17 21x12 45-40 6-11 37-31 26x37 42x31}

17-21 {diepte 18, 4.2 sec, 17-21,-2 13-19,-4 9-14,-6 15-20,-8 6-11,-8 18-23,-8 4-10,-10 2-7,-10 8-12,-14 22-27,-96 26-31,-96 hv 17-21 28x17 21x12 38-32 6-11 43-38 9-14 32-28 13-19 45-40 18-23}

31. 28x17 {diepte 7, 0.0 sec, 28x17,-4 hv 28x17 21x12 45-40 6-11 37-31 26x37 42x31 9-14 38-32}

21x12 {diepte 7, 0.0 sec, 21x12,-4 hv 21x12 45-40 6-11 37-31 26x37 42x31 9-14 38-32}

32. 33-28 {diepte 18, 5.3 sec, 38-32,-2 34-29,-2 37-32,-2 45-40,0 33-28,0 33-29,0 49-44,0 34-30,0 36-31,0 37-31,2 hv 38-32 6-11 43-38 9-14 32-28 13-19 45-40 18-23 38-32 11-16 37-31}

9-14 {diepte 18, 5.9 sec, 13-19,0 6-11,0 2-7,0 9-14,0 15-20,-2 4-10,-2 12-17,-2 18-22,-2 18-23,-4 26-31,-92 hv 13-19 39-33 6-11 49-44 8-13 45-40 18-23 38-32 15-20 33-29 2-7}

33. 39-33 {diepte 17, 3.3 sec, 45-40,0 39-33,0 38-33,0 49-44,0 34-29,0 37-32,0 36-31,0 38-32,1 37-31,2 34-30,6 28-22,50 28-23,92 hv 45-40 14-19 39-33 3-9 33-29 19-24 29x20 15x24 38-33 9-14 34-29}

14-19 {diepte 17, 3.6 sec, 15-20,0 13-19,0 14-19,0 3-9,0 4-9,-2 6-11,-2 14-20,-2 2-7,-2 4-10,-2 18-22,-4 12-17,-4 26-31,-92 18-23,-350 hv 15-20 34-29 20-25 45-40 3-9 43-39 6-11 49-43 14-19 29-24 19x30}

34. 49-44 {diepte 17, 3.4 sec, 33-29,0 45-40,0 38-32,0 43-39,0 49-44,0 36-31,0 37-32,0 37-31,4 34-29,4 28-22,32 34-30,86 28-23,274 hv 33-29 3-9 45-40 19-24 29x20 15x24 38-33 9-14 43-38 6-11 34-29}

15-20 {diepte 17, 3.9 sec, 15-20,0 3-9,0 4-10,0 19-24,0 6-11,0 2-7,0 4-9,-2 18-23,-2 12-17,-2 18-22,-2 19-23,-6 26-31,-92 hv 15-20 38-32 4-10 45-40 20-24 42-38 18-23 37-31 26x37 32x41 23x32}

35. 34-29 {diepte 17, 3.7 sec, 33-29,0 43-39,0 36-31,2 38-32,2 34-29,2 37-32,2 44-40,2 45-40,4 44-39,4 37-31,4 28-22,26 34-30,86 28-23,490 hv 33-29 3-9 45-40 19-24 38-33 6-11 43-38 11-17 44-39 9-14 37-31}

19-24 {diepte 17, 3.6 sec, 19-23,2 20-25,0 18-22,0 19-24,-2 20-24,-2 6-11,-78 3-9,-80 2-7,-82 12-17,-84 26-31,-88 18-23,-94 4-9,-124 4-10,-300 hv 19-23 28x19 13x24 45-40 6-11 44-39 3-9 38-32 9-14 43-38 11-16}

36. 43-39 {diepte 18, 4.5 sec, 36-31,-2 44-39,0 44-40,0 43-39,0 45-40,0 37-32,0 38-32,0 37-31,2 28-23,24 29-23,76 28-22,82 hv 36-31 20-25 29x20 25x14 43-39 6-11 31-27 13-19 37-32 8-13 39-34}

6-11 {diepte 18, 5.5 sec, 6-11,0 3-9,0 12-17,-1 13-19,-2 20-25,-2 4-10,-4 2-7,-4 4-9,-8 18-22,-10 24-30,-92 26-31,-96 18-23,-198 hv 6-11 37-32 3-9 42-37 11-16 45-40 20-25 29x20 25x14 36-31 12-17}

37. 37-32 {diepte 18, 4.5 sec, 36-31,0 38-32,0 37-32,0 45-40,2 37-31,2 39-34,4 44-40,4 48-43,6 28-23,32 28-22,58 29-23,78 hv 36-31 12-17 37-32 26x37 42x31 11-16 48-42 3-9 42-37 8-12 45-40}

11-16 {diepte 18, 5.7 sec, 11-16,2 11-17,0 12-17,0 3-9,-1 13-19,-1 20-25,-2 2-7,-4 4-10,-4 4-9,-8 24-30,-90 26-31,-96 18-23,-308 18-22,-316 hv 11-16 45-40 18-22 28x17 12x21 39-34 21-27 32x21 16x27 40-35 4-10}

38. 39-34 {diepte 18, 3.9 sec, 36-31,0 45-40,2 39-34,2 42-37,4 44-40,6 48-43,8 32-27,18 28-23,22 29-23,86 28-22,96 hv 36-31 26x37 42x31 18-22 28x17 12x21 32-28 8-12 45-40 2-8 40-34}

20-25 {diepte 18, 4.1 sec, 18-22,1 3-9,0 12-17,0 20-25,-2 13-19,-4 2-7,-4 16-21,-10 4-9,-30 26-31,-98 4-10,-178 18-23,-196 24-30,-246 hv 18-22 28x17 12x21 29-23 20-25 45-40 8-12 34-30 25x45 44-40 45x34}

39. 29x20 {diepte 7, 0.0 sec, 29x20,0 hv 29x20 25x14 45-40 18-22 28x17 12x21 42-37 21-27 32x21}

25x14 {diepte 7, 0.0 sec, 25x14,0 hv 25x14 45-40 18-22 28x17 12x21 42-37 21-27 32x21 26x17}

40. 34-29 {diepte 18, 4.4 sec, 42-37,0 36-31,0 44-39,0 45-40,0 34-29,2 34-30,3 44-40,4 33-29,6 48-43,6 32-27,6 28-22,96 28-23,598 hv 42-37 12-17 44-39 17-21 45-40 3-9 40-35 21-27 32x21 26x17 37-31}

3-9 {diepte 18, 5.0 sec, 18-22,2 3-9,0 12-17,0 2-7,-2 14-19,-2 13-19,-6 4-10,-6 4-9,-6 16-21,-12 14-20,-78 26-31,-98 18-23,-284 hv 18-22 28x17 12x21 42-37 21-27 32x21 26x17 38-32 3-9 45-40 8-12}

41. 42-37 {diepte 18, 3.9 sec, 36-31,0 42-37,0 44-39,2 45-40,2 44-40,4 29-24,8 48-43,10 32-27,12 29-23,88 28-22,96 28-23,198 hv 36-31 26x37 42x31 14-19 44-39 2-7 45-40 12-17 39-34 18-23 29x18}

16-21 {diepte 18, 4.3 sec, 18-22,2 16-21,0 12-17,-2 2-7,-2 14-19,-8 4-10,-8 13-19,-10 14-20,-84 26-31,-98 18-23,-110 hv 18-22 28x17 12x21 45-40 13-18 40-35 8-13 32-28 18-22 28x17 21x12}

42. 44-39 {diepte 18, 4.0 sec, 45-40,-2 44-39,0 36-31,0 44-40,2 48-43,2 29-24,4 37-31,6 48-42,8 28-23,8 29-23,8 28-22,92 32-27,218 hv 45-40 21-27 32x21 26x17 40-35 17-22 28x17 12x21 33-28 8-12 44-39}

21-27 {diepte 19, 5.4 sec, 21-27,-1 4-10,-8 2-7,-8 18-22,-10 12-17,-54 13-19,-76 14-19,-78 14-20,-84 18-23,-196 26-31,-258 hv 21-27 32x21 26x17 45-40 17-22 28x17 12x21 38-32 21-26 32-28 14-19}

43. 32x21 {diepte 7, 0.0 sec, 32x21,4 hv 32x21 26x17 45-40 17-22 28x17 12x21 33-28 8-12 40-35}

26x17 {diepte 7, 0.0 sec, 26x17,4 hv 26x17 45-40 17-22 28x17 12x21 29-24 18-22}

44. 45-40 {diepte 18, 5.4 sec, 45-40,-2 38-32,-2 36-31,0 39-34,0 48-42,0 48-43,0 37-32,1 28-23,3 37-31,4 29-24,4 29-23,86 28-22,94 hv 45-40 17-22 28x17 12x21 38-32 21-26 32-28 14-20 36-31 13-19 31-27}

17-22 {diepte 17, 3.3 sec, 17-22,-2 2-7,-6 4-10,-8 17-21,-10 18-22,-18 14-20,-84 18-23,-104 14-19,-182 13-19,-190 hv 17-22 28x17 12x21 33-28 14-19 39-33 21-26 36-31 8-12 38-32 2-8}

45. 28x17 {diepte 7, 0.0 sec, 28x17,2 hv 28x17 12x21 33-28 8-12 40-35 21-26 39-34 13-19}

12x21 {diepte 7, 0.0 sec, 12x21,2 hv 12x21 33-28 8-12 40-35 21-26 39-34 13-19}

46. 37-32 {diepte 17, 4.1 sec, 38-32,-2 33-28,0 40-35,0 40-34,0 39-34,0 37-32,1 36-31,1 48-42,1 48-43,2 29-24,4 29-23,4 37-31,26 hv 38-32 21-26 32-28 13-19 36-31 8-13 39-34 14-20 40-35 20-25 37-32}

21-26 {diepte 17, 3.4 sec, 8-12,-2 21-26,-2 14-19,-2 13-19,-2 2-7,-4 18-23,-4 18-22,-4 4-10,-6 14-20,-84 21-27,-98 hv 8-12 32-28 21-26 39-34 12-17 28-23 18-22 29-24 13-19 24x13 9x29}

47. 32-28 {diepte 18, 4.7 sec, 40-35,-2 48-42,-1 39-34,-1 40-34,0 29-23,0 29-24,0 32-28,1 33-28,1 32-27,18 48-43,142 36-31,320 hv 40-35 8-12 32-28 12-17 28-23 18-22 35-30 17-21 30-24 13-18 23x12}

8-12 {diepte 18, 5.5 sec, 14-19,1 8-12,-2 4-10,-4 13-19,-6 14-20,-96 26-31,-118 18-23,-120 18-22,-162 2-7,-2576 hv 14-19 38-32 26-31 36x27 18-23 29x18 13x31 32-27 31x22 28x17 8-12}

48. 48-42 {diepte 19, 6.4 sec, 39-34,-2 40-35,-2 38-32,-2 48-42,-2 40-34,0 28-23,0 29-24,1 29-23,1 48-43,1 28-22,102 36-31,126 hv 39-34 2-8 34-30 18-22 28x17 12x21 33-28 13-18 40-35 18-22 28x17}

2-8 {diepte 18, 5.1 sec, 2-7,-3 12-17,-4 2-8,-8 13-19,-12 4-10,-14 14-19,-16 14-20,-92 26-31,-130 18-23,-564 18-22,-848 hv 2-7 42-37 14-19 38-32 18-23 29x18 12x23 39-34 9-14 36-31 14-20}

49. 42-37 {diepte 19, 4.8 sec, 28-23,-6 42-37,-4 40-34,-3 40-35,-3 38-32,0 39-34,0 29-23,1 29-24,1 28-22,94 36-31,692 hv 28-23 18-22 29-24 12-17 23-18 14-19 18x27 19x30 38-32 30-35 32-28}

12-17 {diepte 19, 5.0 sec, 14-19,-1 18-22,-1 12-17,-14 4-10,-40 14-20,-142 26-31,-174 18-23,-640 13-19,-738 hv 14-19 38-32 18-22 28x17 12x21 32-28 8-12 36-31 12-18 40-34 19-24}

50. 39-34 {diepte 19, 4.0 sec, 40-35,-12 36-31,-8 40-34,-3 39-34,-3 29-24,-3 38-32,-3 28-23,-3 29-23,0 37-32,1 28-22,102 37-31,172 hv 40-35 17-22 28x17 18-23 29x18 13x11 36-31 9-13 39-34 8-12 33-28}

17-21 {diepte 19, 5.3 sec, 8-12,-4 17-21,-4 18-22,-12 17-22,-16 4-10,-46 26-31,-190 18-23,-196 13-19,-880 14-19,-2592 14-20,-2714 hv 8-12 38-32 17-21 36-31 12-17 34-30 14-19 29-24 17-22 28x17 21x12}

51. 29-23 {diepte 19, 3.7 sec, 28-23,-4 36-31,-3 40-35,-3 29-23,-3 38-32,-3 34-30,-3 37-32,-1 29-24,0 28-22,76 37-31,216 hv 28-23 8-12 34-30 12-17 23x12 17x8 29-23 8-12 40-34 13-18 34-29}

18x29 {diepte 7, 0.0 sec, 18x29,2 hv 18x29 34x23 8-12 28-22 13-19 22-17 19x39 17x8}

52. 34x23 {diepte 24, 3.5 sec, 34x23,-3 33x24,1 hv 34x23 8-12 33-29 13-18 40-35 14-20 23-19 4-10 36-31 9-14 29-24}

8-12 {diepte 19, 5.5 sec, 8-12,-3 13-19,-30 14-20,-40 4-10,-78 21-27,-266 26-31,-552 13-18,-2606 14-19,-2632 hv 8-12 28-22 13-18 22x13 9x29 33x24 21-27 40-34 12-18 38-33 18-23}

53. 37-32 {diepte 19, 3.7 sec, 28-22,-3 33-29,-3 40-34,-3 40-35,0 36-31,1 38-32,1 37-32,1 37-31,322 23-18,2588 23-19,2634 hv 28-22 13-18 22x13 9x29 33x24 21-27 40-34 12-18 38-33 18-23 24-19}

12-17 {diepte 20, 3.6 sec, 13-19,1 12-17,1 13-18,1 21-27,1 12-18,1 26-31,-642 14-20,-2520 14-19,-2628 4-10,-2632 hv 13-19 40-34 9-13 34-30 12-18 23x12 21-27 32x21 26x8 28-22 14-20}

54. 40-34 {diepte 21, 4.3 sec, 33-29,1 40-34,1 36-31,1 40-35,1 23-18,220 23-19,340 28-22,790 32-27,3976 hv 33-29 13-18 23x12 17x8 40-34 9-13 38-33 13-19 34-30 4-10 30-25}

13-18 {diepte 21, 9.2 sec, 13-18,1 17-22,1 13-19,1 14-20,1 4-10,1 26-31,-680 21-27,-2568 14-19,-2726 hv 13-18 23x12 17x8 33-29 9-13 34-30 8-12 36-31 26x37 32x41 21-27}

55. 23x12 {diepte 7, 0.0 sec, 23x12,2 hv 23x12 17x8 33-29 8-12 28-23 9-13 29-24 13-18 34-29}

17x8 {diepte 7, 0.0 sec, 17x8,2 hv 17x8 33-29 8-12 28-23 9-13 29-24 13-18 34-29}

56. 28-23 {diepte 18, 5.1 sec, 34-30,1 33-29,1 28-23,1 34-29,1 36-31,1 32-27,2658 28-22,2716 hv 34-30 14-19 33-29 9-13 36-31 26x37 32x41 4-10 41-37 21-27 30-25}

9-13 {diepte 20, 3.8 sec, 8-12,1 9-13,1 14-20,1 4-10,1 8-13,1 21-27,1 26-31,-2594 14-19,-3980 hv 8-12 33-29 12-18 23x12 21-27 32x21 26x8}

57. 33-28 {diepte 19, 4.5 sec, 34-30,1 32-28,1 33-28,1 33-29,1 34-29,3 23-18,230 23-19,2498 32-27,3980 36-31,3992 hv 34-30 8-12 30-24 4-9 33-29 12-18 23x12 21-27 32x21 26x8}

8-12 {diepte 19, 3.5 sec, 8-12,1 4-9,1 13-19,1 4-10,1 21-27,1 14-20,1 14-19,-2540 26-31,-2576 13-18,-3984 hv 8-12 38-33 12-17 33-29 13-19 36-31 26x37 32x41 21-26 28-22 19x28}

58. 38-33 {diepte 20, 4.0 sec, 38-33,1 34-30,1 36-31,1 34-29,30 23-19,2474 28-22,2648 32-27,3976 23-18,3986 hv 38-33 21-27 32x21 26x17 34-30 13-18 33-29 18-22 30-24 22x33 29x38}  
21-27 {diepte 21, 4.1 sec, 12-17,1 21-27,1 12-18,1 13-18,1 13-19,1 14-19,-2596 26-31,-2710 4-10,-3974 14-20,-3976 4-9,-3976 hv 12-17 33-29 13-18 23x12 17x8 36-31 26x37 32x41}

59. 32x21 {diepte 7, 0.0 sec, 32x21,1 hv 32x21 26x17 34-30 13-18 33-29 18-22 30-24 22x33}  
26x17 {diepte 7, 0.0 sec, 26x17,1 hv 26x17 34-30 13-18 33-29 18-22 30-24 22x33 29x38}

60. 34-30 {diepte 21, 4.1 sec, 33-29,1 34-30,1 36-31,2558 34-29,2560 23-19,3978 23-18,3982 28-22,3990 hv 33-29 13-18 34-30 18-22 30-24 22x33 29x38}  
13-18 {diepte 23, 3.7 sec, 13-18,1 4-10,1 14-20,1 4-9,1 13-19,1 17-21,1 14-19,-2644 12-18,-3976 17-22,-3994 hv 13-18 33-29 18-22 30-24 22x33 29x38}

61. 33-29 {diepte 20, 4.9 sec, 33-29,1 23-19,3978 36-31,3982 28-22,3984 30-24,3984 30-25,3986 hv 33-29 18-22 30-24 22x33 29x38}  
4-10 {diepte 24, 5.1 sec, 18-22,1 4-10,1 17-21,1 14-20,1 4-9,1 14-19,-2496 17-22,-3984 hv 18-22 30-24 22x33 29x38}

62. 36-31 {diepte 27, 3.7 sec, 36-31,1 30-24,1 30-25,2616 28-22,3978 29-24,3984 23-19,3992 hv 36-31 18-22 30-24 22x33 29x38}  
10-15 {diepte 23, 3.9 sec, 18-22,1 17-21,-3 14-20,-2626 10-15,-2626 17-22,-3984 14-19,-3988 hv 18-22 30-24 22x33 29x38}

63. 31-27 {diepte 25, 4.3 sec, 31-27,-2656 31-26,1 30-24,1 30-25,2616 29-24,2688 28-22,3984 23-19,3990 hv 31-27 14-20 30-24 20-25 23-19 17-21 27x16 12-17 16-11 17x6 19-14}  
14-20 {diepte 22, 5.0 sec, 14-20,-2642 15-20,-2702 17-21,-3978 18-22,-3982 14-19,-3984 17-22,-3986 hv 14-20 30-24 20-25 23-19 17-21 27x16 12-17 16-11 17x6 19-14 18-23}

64. 30-24 {diepte 26, 10.6 sec, 30-24,-2718 30-25,1 29-24,1 27-21,3 27-22,3 23-19,3 28-22,3986 hv 30-24 20-25 23-19 15-20 24x15 25-30 19-14 30-35 14-9 35-40 9-3}  
20-25 {diepte 22, 5.1 sec, 20-25,-2668 18-22,-3982 17-21,-3984 17-22,-3986 hv 20-25 23-19 17-21 27x16 12-17 16-11 17x6 19-14 15-20 24x15 18-23}

65. 23-19 {diepte 23, 6.3 sec, 23-19,-2710 24-19,1 27-22,1 27-21,3 28-22,3990 24-20,3992 hv 23-19 15-20 24x15 25-30 19-14 30-35 14-9 35-40 9-3 18-22 27x7}  
15-20 {diepte 20, 5.2 sec, 17-21,-2654 25-30,-2702 15-20,-2710 18-22,-3978 17-22,-3986 18-23,-3988 hv 17-21 27x16 12-17 16-11 17x6 19-14 18-23 29x18 15-20 24x15 25-30}

66. 24x15 {diepte 7, 0.0 sec, 24x15,-2512 hv 24x15 25-30 19-13 18x9 29-24 30x19 15-10 19-24}  
25-30 {diepte 19, 4.0 sec, 25-30,-2706 17-21,-2714 18-22,-3986 17-22,-3988 18-23,-3990 hv 25-30 19-14 30-35 14-9 35-40 9-3 17-21 3x26 40-44 26-31 44-49}

67. 19-13 {diepte 20, 5.3 sec, 19-14,-2716 15-10,-2706 19-13,-2654 28-23,-5 29-24,1 27-22,1 27-21,1 28-22,1 29-23,1 hv 19-14 30-35 14-9 35-40 9-3 18-22 27x7 40-44 3x26 44-49 15-10}  
18x9 {diepte 7, 0.0 sec, 18x9,-2526 hv 18x9 29-24 30x19 15-10 19-24 10-4 9-14 4-13}

68. 29-24 {diepte 41, 3.4 sec, 29-24,-3973 27-22,1 28-23,1 15-10,1 29-23,1 27-21,3 28-22,3 hv 29-24 30x19 15-10 19-24 10-4 9-14 4-15 24-30 15-29 12-18 29x26}  
30x19 {diepte 7, 0.0 sec, 30x19,-2526 hv 30x19 15-10 19-24 10-4 9-14 4-15 24-30}

69. 15-10 {diepte 49, 3.4 sec, 15-10,-3975 28-23,3 27-21,3 28-22,3 27-22,3 hv 15-10 19-24 10-4 9-14 4-15 24-30 15-29 12-18 29x26 30-34 26-48}  
12-18 {diepte 27, 3.7 sec, 19-24,-3972 17-21,-3980 12-18,-3984 9-14,-3984 19-23,-3986 9-13,-3986 17-22,-3988 hv 19-24 10-4 9-14 4-15 24-30 15-29 12-18 29x26 30-34 26-48 34-40}

70. 10-4 {diepte 56, 3.4 sec, 10-4,-3985 27-22,-3971 10-5,-3 28-23,3 27-21,3 28-22,3 hv 10-4 9-14 4x11 19-24 11-2 24-29 2-7 29-33 28x39 14-20 7-11}  
18-22 {diepte 42, 3.5 sec, 18-22,-3984 9-14,-3986 9-13,-3986 17-21,-3988 17-22,-3990 19-24,-3992 19-23,-3992 18-23,-3994 hv 18-22 4x30 22x31 30-19 17-21 28-22 21-26 22-18 31-37 19x41 26-31}

71. 4x24 {diepte 61, 0.0 sec, 4x24,-3987 4x30,-3987 4x35,-3987 hv 4x24 22x31 24-19 17-21 28-22 31-36 19-14 21-26 22-17 26-31 14-46}  
22x31 {diepte 61, 0.0 sec, 22x31,-3988 22x33,-3996 hv 22x31 24-19 17-21 28-22 21-27 22-17 31-36 19-14 27-31 14-46 36-41}

72. 24-19 {diepte 61, 0.0 sec, 24-19,-3989 24-42,-3987 28-23,-3 24-30,-3 24-35,-3 24-29,-3 24-33,-3 24-38,-3 24-47,-3 24-20,-3 24-15,-3 24-13,-3 24-8,-3 24-2,-3 28-22,-3 hv 24-19 17-21 28-22 31-36 19-23 21-26 22-17 26-31 23-46 36-41 46x26}

{diepte 61, 0.0 sec, 17-21,-3990 17-22,-3994 31-36,-3994 31-37,-3996 hv 17-21 28-22 31-36 22-18 21-26 19-46 26-31 18-12 36-41 46x26}

\*