

Analyse Anton van Drumpt – Wil van den Braak nationale competitie 4 november 2023

Analyse met Dragon Dammen (met de juiste zetten 14. ... 3-9 en 37. ... 4-9)

1. 32-28 16-21 2. 37-32 11-16 3. 34-30 7-11 4. 30-25 18-22 5. 41-37
13-18 6. 40-34 21-26 7. 34-29 9-13 8. 29-24 19x30 9. 25x34 1-7 10. 34-30
20-25 11. 44-40 25x34 12. 40x29 17-21 13. 28x17 11x22 14. 50-44 3-9 15.
35-30 21-27 16. 32x21 16x27 17. 30-25 6-11 18. 38-32 27x38 19. 43x32
14-19 20. 32-28 11-16 21. 28x17 12x21 22. 29-24 19x30 23. 25x34 10-14
24. 47-41 14-19 25. 31-27 21x32 26. 37x28 7-12 27. 36-31 26x37 28. 41x32
19-24 29. 49-43 13-19 30. 43-38 9-13 31. 32-27 18-23 32. 38-32 12-17 33.
42-38 8-12 34. 44-40 2-8 35. 48-43 17-21 36. 46-41 5-10 37. 41-37 4-9
38. 34-29 23x34 39. 40x29x20 15x24 40. 37-31 13-18 41. 39-34 10-14 42.
34-29 8-13 43. 29x20 14x25 44. 43-39 25-30

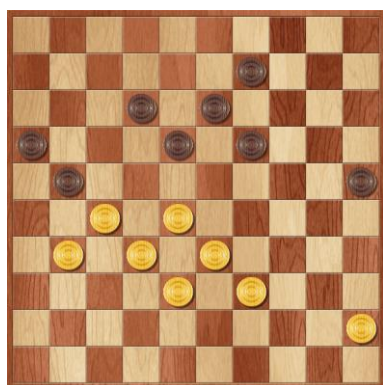
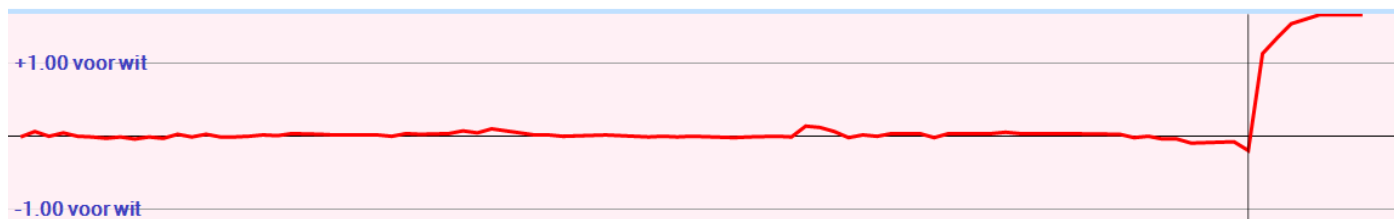
(12-17 is better 45. 39-34 19-24 46. 31-26 25-30 47. 34x25 24-29 48. 33x24 18-22
49. 27x18 13x22x33x42 50. 25-20 42-48 51. 24-19 48-30 52. 19-14 30-25 53. 14x3
25x14x46 -0.06 at 23 ply)

45. 28-22 21-26

(30-34 may be better 46. 39x30 21-26 47. 32-28 26x37 48. 27-21 18x27 49.
21x32x41 12-17 50. 45-40 13-18 51. 40-34 18-22 52. 34-29 22-27 53. 38-32 27x38
54. 33x42 16-21 55. 29-24 9-13 +3.05 at 22 ply)

46. 22-17 26x37x28 47. 17x8 13x2 48. 33x22x13x24x35

black loses the game (31 ply)



Analyse met Kingsrow (met de juiste zetten 14. ... 3-9 en 37. ... 4-9)

1. 32-28 {34-30(0/29)* 34-29(0/28)* 31-27(0/31)? 32-27(0/31)? 31-26(0/28)? 32-28(0/26)? 33-29(2/26)? 33-28(2/26)? 35-30(6/26)?}
16-21 {17-22(0/28)* 17-21(0/25)* 20-25(0/25)? 18-23(0/25)? 19-23(0/24)? 16-21(-2/27)? 18-22(-2/27)? 19-24(-2/24)? 20-24(-2/24)?}
2. 37-32 {31-26(-2/26)* 33-29(0/23)? 37-32(0/19)? 34-29(2/17)? 34-30(2/16)? 38-32(4/14)? 28-22(16/17)?}
11-16 {21-27(0/18)* 11-16(-2/25)? 21-26(-2/10)? 18-23(-6/1)? 20-25(-8/13)? 20-24(-8/12)? 19-24(-10/10)?}
3. 34-30 {31-26(-2/24)* 41-37(0/11)? 34-29(0/11)? 31-27(2/21)? 42-37(2/15)? 33-29(2/15)? 34-30(2/15)?}
7-11 {6-11(2/14)* 7-11(0/17)? 19-23(0/14)? 20-25(0/12)? 21-26(-2/13)? 18-23(-2/13)? 18-22(-2/9)? 20-24(-6/12)? 19-24(-8/6)?}
4. 30-25 {41-37(0/16)* 40-34(2/16)? 30-25(2/13)? 39-34(2/11)? 31-27(2/11)? 42-37(4/16)? 30-24(4/14)? 31-26(4/10)?}
18-22 {19-23(2/12)* 1-7(0/1)? 21-27(0/1)? 18-22(-2/1)? 18-23(-4/5)? 2-7(-4/1)?}
5. 41-37 {31-27(-2/0)* 40-34(-2/6)*}
13-18 {diepte 19, 3.5 sec, 21-26,-2 21-27,-4 13-18,-8 1-7,-8 12-18,-8 2-7,-18 20-24,-30 19-23,-52 19-24,-74 22-27,-78 hv 21-26 31-27 22x31 36x27 1-7 40-34 17-22 27x18 13x22 28x17 12x21}
6. 40-34 {diepte 19, 3.5 sec, 31-26,-10 31-27,-4 46-41,0 40-34,0 39-34,0 35-30,0 47-41,2 28-23,50 33-29,186 32-27,200 hv 31-26 18-23 46-41 1-7 40-34 21-27 32x21 16x27 45-40 23x32 37x28}
21-26 {diepte 19, 4.2 sec, 21-26,0 21-27,-2 9-13,-8 1-7,-10 19-23,-10 8-13,-10 18-23,-10 2-7,-12 19-24,-24 20-24,-28 22-27,-212 hv 21-26 45-40 9-13 46-41 4-9 34-30 17-21 28x17 11x22 31-27 22x31}
7. 34-29 {diepte 19, 3.3 sec, 45-40,0 34-30,0 46-41,0 34-29,0 44-40,0 47-41,0 35-30,80 31-27,88 28-23,96 32-27,100 33-29,186 hv 45-40 9-13 34-30 1-7 50-45 4-9 47-41 17-21 28x17 11x22 32-27}
9-13 {diepte 19, 3.7 sec, 9-13,0 19-23,-2 8-13,-2 17-21,-4 1-7,-4 20-24,-8 19-24,-28 18-23,-190 22-27,-316 2-7,-400 16-21,-492 hv 9-13 44-40 4-9 40-34 2-7 47-41 17-21 28x17 11x22 32-27 21x32}
8. 29-24 {diepte 19, 3.3 sec, 44-40,-2 47-41,0 46-41,0 39-34,0 29-24,2 29-23,24 31-27,86 28-23,98 32-27,102 45-40,178 35-30,190 hv 44-40 1-7 46-41 17-21 28x17 11x22 31-27 22x31 36x27 4-9 27-22}
19x30 {diepte 22, 4.7 sec, 20x29,2 19x30,0 hv 20x29 33x24 22x33 39x28 19x30 25x34 17-22 28x17 11x22 45-40 15-20}
9. 25x34 {diepte 22, 7.1 sec, 25x34,0 35x24,88 hv 25x34 1-7 34-30 20-25 47-41 25x34 39x30 17-21 28x17 11x22 44-39}
1-7 {diepte 19, 5.3 sec, 1-7,0 14-19,0 4-9,0 20-25,0 2-7,-2 17-21,-4 13-19,-4 3-9,-4 20-24,-6 18-23,-18 22-27,-40 16-21,-104 hv 1-7 45-40 4-9 47-41 14-19 34-30 20-25 50-45 25x34 39x30 10-14}
10. 34-30 {diepte 19, 5.4 sec, 34-30,0 45-40,0 44-40,2 46-41,2 47-41,2 34-29,2 35-30,72 31-27,90 28-23,100 32-27,102 33-29,204 hv 34-30 20-25 46-41 25x34 39x30 17-21 28x17 11x22 31-27 22x31 36x27}
20-25 {diepte 20, 6.3 sec, 20-25,0 14-19,0 17-21,-4 4-9,-4 13-19,-8 20-24,-8 3-9,-10 18-23,-14 22-27,-28 16-21,-96 hv 20-25 47-41 25x34 39x30 17-21 28x17 11x22 44-39 4-9 50-44 14-20}
11. 44-40 {diepte 19, 4.7 sec, 46-41,-2 47-41,0 44-40,2 28-23,14 39-34,22 30-24,58 31-27,88 32-27,100 45-40,176 33-29,204 hv 46-41 25x34 39x30 17-21 28x17 11x22 31-27 22x31 36x27 7-11 41-36}
25x34 {diepte 7, 0.0 sec, 25x34,4 hv 25x34 39x30 17-21 28x17 11x22 43-39 14-19 49-43}
12. 40x29 {diepte 22, 5.4 sec, 39x30,0 40x29,2 hv 39x30 14-19 30-25 10-14 50-44 5-10 44-39 17-21 28x17 11x22 31-27}
17-21 {diepte 19, 4.4 sec, 17-21,2 14-19,2 4-9,0 14-20,0 15-20,-2 3-9,-4 13-19,-4 22-27,-50 16-21,-96 18-23,-214 hv 17-21 28x17 11x22 32-28 7-11 28x17 11x22 35-30 14-20 50-44 6-11}
13. 28x17 {diepte 7, 0.0 sec, 28x17,4 hv 28x17 11x22 32-28 12-17 46-41 14-19}
11x22 {diepte 7, 0.0 sec, 11x22,6 hv 11x22 32-28 15-20 28x17 7-11 29-23}
14. 50-44 {diepte 17, 3.4 sec, 32-28,4 49-44,4 35-30,4 39-34,4 46-41,6 45-40,6 47-41,6 31-27,6 50-44,8 29-23,22 29-24,24 32-27,102 33-28,200 hv 32-28 7-11 28x17 11x22 35-30 4-9 47-41 6-11 49-44 14-19 30-25}
3-9 {diepte 18, 5.7 sec, 21-27,6 14-20,2 7-11,0 4-9,-2 14-19,-2 6-11,-2 12-17,-4 3-9,-6 13-19,-6 22-27,-14 15-20,-84 22-28,-94 18-23,-208 hv 21-27 32x21 16x27 45-40 14-19 29-24 19x30 35x24 18-23 47-41 23-28}

15. 35-30 {diepte 18, 4.7 sec, 47-41,-6 35-30,-6 32-28,-2 45-40,0 44-40,2 39-34,6 29-24,6 46-41,6 29-23,16 31-27,76 32-27,100 33-28,196 hv 47-41 21-27 32x21 26x17 37-32 14-19 41-37 10-14 35-30 19-23 30-25}
21-27 {diepte 19, 5.3 sec, 21-27,-4 14-19,-6 6-11,-6 14-20,-8 13-19,-8 7-11,-10 12-17,-14 22-27,-68 15-20,-90 22-28,-90 18-23,-176 hv 21-27 32x21 16x27 30-25 6-11 47-41 14-19 29-24 19x30 25x34 22-28}
16. 32x21 {diepte 7, 0.0 sec, 32x21,0 hv 32x21 16x27 30-25 14-19 47-41}
16x27 {diepte 21, 5.2 sec, 16x27,-2 26x17,-10 hv 16x27 30-25 14-19 47-41 18-23 29x18 12x23 39-34 22-28 33x22 27x18}
17. 30-25 {diepte 18, 4.3 sec, 44-40,-6 30-25,-4 45-40,2 47-41,6 38-32,6 29-24,8 39-34,8 30-24,10 29-23,16 37-32,178 46-41,186 33-28,206 hv 44-40 14-20 37-32 26x28 39-34 28x39 30-25 39x30 25x3 15-20 3x17}
6-11 {diepte 19, 4.9 sec, 14-19,-2 18-23,-4 6-11,-8 7-11,-12 12-17,-16 13-19,-34 22-28,-82 15-20,-86 27-32,-106 14-20,-422 hv 14-19 47-41 18-23 29x18 12x23 33-28 22x33 38x18 13x22 42-38 19-23}
18. 38-32 {diepte 19, 5.3 sec, 47-41,-8 45-40,0 46-41,0 38-32,4 44-40,4 29-24,4 29-23,8 39-34,92 25-20,102 33-28,118 37-32,184 hv 47-41 14-19 29-24 19x30 25x34 22-28 33x22 18-23 22-17 11x22 38-33}
27x38 {diepte 7, 0.0 sec, 27x38,4 hv 27x38 43x32 14-19 32-28 11-16 28x17 12x21 29-24 19x30}
19. 43x32 {diepte 7, 0.0 sec, 43x32,-2 hv 43x32 11-17 46-41 13-19 44-40 19-23 48-43}
14-19 {diepte 18, 4.8 sec, 22-27,4 15-20,0 14-19,0 13-19,-2 11-17,-2 12-17,-2 11-16,-2 22-28,-86 18-23,-178 14-20,-396 hv 22-27 32x21 26x17 37-32 15-20 46-41 10-15 41-37 20-24 29x20 15x24}
20. 32-28 {diepte 18, 5.5 sec, 32-28,0 46-41,0 48-43,4 29-24,4 39-34,4 45-40,6 44-40,6 42-38,6 47-41,6 49-43,8 25-20,14 32-27,38 31-27,90 33-28,194 29-23,302 hv 32-28 11-17 29-24 19x30 25x34 13-19 37-32 26x37 42x31 10-14 46-41}
11-16 {diepte 19, 3.6 sec, 11-16,0 11-17,-2 12-17,-10 22-27,-92 19-23,-92 18-23,-176 19-24,-186 10-14,-194 9-14,-206 15-20,-368 hv 11-16 28x17 12x21 29-24 19x30 25x34 10-14 46-41 5-10 31-27 21x32}
21. 28x17 {diepte 7, 0.0 sec, 28x17,-6 hv 28x17 12x21 29-24 19x30 25x34 7-12 46-41 9-14 31-27}
12x21 {diepte 7, 0.0 sec, 12x21,0 hv 12x21 46-41 19-24 29x20 15x24 45-40 10-14 31-27}
22. 29-24 {diepte 18, 5.1 sec, 29-24,0 45-40,2 49-43,2 46-41,2 44-40,2 42-38,4 48-43,4 47-41,4 33-28,10 39-34,12 31-27,94 29-23,96 25-20,98 37-32,180 hv 29-24 19x30 25x34 10-14 46-41 5-10 31-27 21x32 37x28 15-20 41-37}
19x30 {diepte 7, 0.0 sec, 19x30,-8 hv 19x30 25x34 9-14 46-41 7-12 48-43 12-17 31-27}
23. 25x34 {diepte 7, 0.0 sec, 25x34,0 hv 25x34 10-14 46-41 5-10 31-27 21x32 37x28 18-23}
10-14 {diepte 18, 3.9 sec, 7-12,0 10-14,-2 15-20,-2 7-11,-2 8-12,-2 9-14,-6 18-22,-6 18-23,-10 21-27,-96 13-19,-96 hv 7-12 46-41 10-14 31-27 21x32 37x28 5-10 41-37 18-23 28x19 14x23}
24. 47-41 {diepte 17, 3.9 sec, 46-41,-2 45-40,0 49-43,2 47-41,2 42-38,2 48-43,2 44-40,4 33-28,4 34-30,6 34-29,16 33-29,22 31-27,90 37-32,180 hv 46-41 5-10 31-27 21x32 37x28 15-20 41-37 7-12 45-40 12-17 36-31}
14-19 {diepte 18, 4.4 sec, 5-10,2 15-20,2 7-12,2 7-11,2 8-12,2 14-19,2 18-22,-2 14-20,-2 4-10,-2 13-19,-88 21-27,-88 18-23,-92 hv 5-10 45-40 15-20 31-27 21x32 37x28 13-19 36-31 26x37 41x32 7-12}
25. 31-27 {diepte 18, 4.9 sec, 45-40,4 31-27,4 44-40,4 49-43,6 42-38,8 48-43,8 34-30,10 33-29,10 33-28,18 34-29,18 37-32,184 hv 45-40 7-12 31-27 21x32 37x28 18-23 42-37 23x32 37x28 5-10 36-31}
21x32 {diepte 7, 0.0 sec, 21x32,-2 hv 21x32 37x28 18-23 42-37 23x32 37x28 15-20 45-40 20-24}
26. 37x28 {diepte 7, 0.0 sec, 37x28,-2 hv 37x28 18-23 42-37 23x32 37x28 15-20 45-40 20-24}
7-12 {diepte 17, 3.8 sec, 5-10,4 18-23,4 7-11,2 8-12,2 15-20,2 7-12,2 16-21,2 9-14,0 19-23,0 4-10,-2 19-24,-2 18-22,-2 26-31,-92 hv 5-10 45-40 18-23 42-37 23x32 37x28 10-14 36-31 26x37 41x32 13-18}
27. 36-31 {diepte 17, 3.6 sec, 45-40,0 36-31,4 41-37,4 44-40,4 49-43,6 42-38,6 42-37,6 34-29,8 48-43,8 33-29,10 34-30,86 28-22,90 28-23,368 hv 45-40 15-20 41-37 18-23 46-41 23x32 37x28 5-10 49-43 13-18 41-37}
26x37 {diepte 7, 0.0 sec, 26x37,0 hv 26x37 41x32 15-20 45-40 5-10 46-41 20-24}
28. 41x32 {diepte 20, 3.6 sec, 41x32,4 42x31,6 hv 41x32 15-20 45-40 5-10 42-37 10-14 34-29 20-24 29x20 14x25 40-34}
19-24 {diepte 18, 5.5 sec, 15-20,6 5-10,4 12-17,4 18-22,4 19-23,2 18-23,2 9-14,0 16-21,0 2-7,0 4-10,0 19-24,0 hv 15-20 45-40 5-10 42-37 10-14 46-41 18-23 33-29 12-17 29x18 13x33}
29. 49-43 {diepte 17, 3.5 sec, 46-41,0 45-40,0 32-27,0 49-43,0 42-37,0 42-38,0 48-43,2 44-40,2 34-29,8 34-30,82 33-29,194 28-22,278 28-23,366 hv 46-41 5-10 45-40 15-20 32-27 10-14 42-37 12-17 28-22 17x28 33x22}
13-19 {diepte 18, 5.5 sec, 5-10,2 13-19,-2 12-17,-4 15-20,-4 18-22,-4 9-14,-6 16-21,-6 2-7,-6 4-10,-8 24-29,-92 24-30,-96 18-23,-182 hv 5-10 45-40 10-14 32-27 15-20 42-37 12-17 28-22 17x28 33x22 8-12}

- 30.** 43-38 {diepte 18, 5.8 sec, 42-38,0 32-27,0 43-38,0 42-37,0 45-40,1 34-29,4 34-30,82 46-41,114 44-40,124 33-29,194 28-23,700 28-22,1056 hv 42-38 18-23 46-41 5-10 41-36 9-13 36-31 12-17 48-42 10-14 42-37}
 9-13 {diepte 17, 3.8 sec, 5-10,2 18-23,2 12-17,-2 16-21,-2 2-7,-4 9-13,-6 15-20,-6 8-13,-8 9-14,-8 4-10,-8 18-22,-14 24-30,-94 19-23,-192 24-29,-566 hv 5-10 32-27 10-14 46-41 18-23 38-32 9-13 45-40 15-20 41-37 20-25}
- 31.** 32-27 {diepte 18, 5.2 sec, 45-40,-2 46-41,0 32-27,0 42-37,2 44-40,2 48-43,2 34-29,4 28-22,72 34-30,82 33-29,192 28-23,474 hv 45-40 15-20 46-41 5-10 41-36 18-23 28-22 12-18 22-17 10-14 32-27}
 18-23 {diepte 17, 3.3 sec, 18-23,0 5-10,-2 15-20,-4 2-7,-4 4-9,-6 12-17,-6 4-10,-12 24-30,-94 16-21,-100 24-29,-102 18-22,-106 19-23,-184 hv 18-23 38-32 5-10 46-41 10-14 41-37 12-17 37-31 8-12 42-37 17-21}
- 32.** 38-32 {diepte 18, 5.6 sec, 38-32,0 28-22,92 48-43,190 27-22,246 27-21,282 46-41,284 45-40,288 33-29,314 42-37,344 34-30,366 44-40,372 34-29,382 hv 38-32 5-10 46-41 10-14 41-37 12-17 37-31 17-21 45-40 8-12 33-29}
 12-17 {diepte 18, 5.3 sec, 5-10,2 13-18,0 12-17,0 15-20,0 2-7,0 4-9,0 12-18,-4 4-10,-8 24-29,-94 24-30,-96 16-21,-102 23-29,-118 hv 5-10 46-41 10-14 41-36 12-17 45-40 15-20 36-31 8-12 42-38 20-25}
- 33.** 42-38 {diepte 18, 5.3 sec, 46-41,0 45-40,1 42-37,2 27-22,4 44-40,4 48-43,4 42-38,4 34-30,84 34-29,90 28-22,90 33-29,290 27-21,836 hv 46-41 5-10 41-37 10-14 37-31 8-12 42-37 14-20 28-22 17x28 33x22}
 8-12 {diepte 18, 4.2 sec, 17-21,0 5-10,0 8-12,0 15-20,0 4-9,-2 2-7,-4 4-10,-4 16-21,-88 24-29,-96 24-30,-100 23-29,-116 13-18,-186 17-22,-192 hv 17-21 48-43 13-18 44-40 8-13 46-41 5-10 41-37 2-7 34-29 23x34}
- 34.** 44-40 {diepte 18, 4.4 sec, 48-43,0 46-41,0 44-40,0 27-22,8 45-40,8 48-42,22 34-30,88 34-29,90 27-21,190 28-22,242 33-29,334 hv 48-43 5-10 46-41 17-21 44-40 12-18 41-37 2-7 34-29 23x34 40x20}
 2-8 {diepte 19, 5.1 sec, 2-7,1 17-21,0 12-18,0 4-9,0 5-10,0 2-8,0 15-20,-4 4-10,-10 13-18,-12 16-21,-104 24-30,-106 23-29,-114 24-29,-188 17-22,-194 hv 2-7 27-22 7-11 48-43 4-9 46-41 5-10 40-35 16-21 35-30 24x35}
- 35.** 48-43 {diepte 19, 5.1 sec, 46-41,0 27-22,0 48-43,2 40-35,12 48-42,36 34-29,90 34-30,104 27-21,200 28-22,214 33-29,334 hv 46-41 17-21 48-43 12-18 41-37 21-26 34-29 23x34 40x20 15x24 37-31}
 17-21 {diepte 19, 4.7 sec, 17-21,0 4-9,-2 5-10,-2 15-20,-4 4-10,-16 24-29,-92 24-30,-100 23-29,-114 16-21,-134 17-22,-186 13-18,-376 12-18,-588 hv 17-21 46-41 12-18 41-37 21-26 34-29 23x34 40x20 15x24 37-31 26x37}
- 36.** 46-41 {diepte 20, 4.0 sec, 46-41,0 34-29,1 28-22,6 40-35,8 27-22,88 34-30,98 33-29,370 hv 46-41 21-26 34-29 23x34 40x20 15x24 45-40 12-18 41-37 8-12 37-31}
 5-10 {diepte 20, 5.4 sec, 12-18,0 21-26,0 4-9,-2 5-10,-2 4-10,-8 15-20,-8 12-17,-46 13-18,-54 24-29,-94 24-30,-100 23-29,-128 hv 12-18 41-37 21-26 34-29 23x34 40x20 15x24 37-31 26x37 32x41 8-12}
- 37.** 41-37 {diepte 20, 5.0 sec, 41-37,-2 28-22,0 34-29,0 41-36,4 27-22,6 40-35,6 34-30,104 33-29,394 hv 41-37 4-9 34-29 23x34 40x20 15x24 45-40 10-15 40-34 15-20 28-22}
 4-9 {diepte 19, 4.5 sec, 12-18,-4 4-9,-6 15-20,-8 13-18,-70 24-29,-108 24-30,-120 21-26,-152 12-17,-368 23-29,-638 10-14,-714 hv 12-18 34-29 23x34 40x20 15x24 27-22 18x27 28-23 19x28 33x31 21-26}
- 38.** 34-29 {diepte 20, 5.5 sec, 34-29,-1 40-35,0 28-22,0 27-22,1 37-31,1 34-30,118 33-29,3982 hv 34-29 23x34 40x20 15x24 45-40 10-15 40-34 15-20 28-23 19x28 33x22}
 23x34 {diepte 7, 0.0 sec, 23x34,0 hv 23x34 40x20 15x24 45-40 10-15 39-34 13-18 40-35}
- 39.** 40x20 {diepte 7, 0.0 sec, 40x20,2 hv 40x20 15x24 39-34 12-18 45-40 18-23 43-39 13-18}
 15x24 {diepte 7, 0.0 sec, 15x24,2 hv 15x24 39-34 12-18 45-40 18-23 43-39 13-18}
- 40.** 37-31 {diepte 20, 5.4 sec, 45-40,0 39-34,2 28-23,2 28-22,2 37-31,4 27-22,38 33-29,3986 hv 45-40 10-15 27-22 21-26 32-27 15-20 40-34 20-25 34-29 12-18 29x20}
 13-18 {diepte 18, 3.7 sec, 24-30,6 13-18,4 12-17,3 10-14,0 21-26,0 10-15,-1 12-18,-1 24-29,-2 9-14,-6 19-23,-188 hv 24-30 45-40 10-14 40-34 21-26 34x25 26x37 32x41 12-17 41-37 16-21}
- 41.** 39-34 {diepte 20, 5.4 sec, 45-40,1 39-34,1 28-22,6 31-26,10 27-22,524 28-23,524 33-29,618 hv 45-40 10-15 39-34 18-23 40-35 9-13 33-29 24x42 43-38 42x22 27x9}
 10-14 {diepte 18, 4.6 sec, 10-14,3 18-23,1 12-17,1 9-13,0 21-26,0 10-15,0 8-13,0 9-14,-4 24-30,-86 19-23,-264 18-22,-560 24-29,-2504 hv 10-14 28-22 21-26 22x2 26x48 34-29 24x42 2x47 48-43 47-41 43x21}
- 42.** 34-29 {diepte 19, 4.2 sec, 45-40,1 28-22,3 43-39,4 31-26,8 34-29,10 34-30,162 27-22,502 33-29,528 28-23,1274 hv 45-40 12-17 43-39 8-13 34-29 21-26 29x20 14x25 40-35 26x37 32x41}
 8-13 {diepte 19, 3.5 sec, 12-17,8 8-13,4 21-26,1 14-20,-3 9-13,-110 19-23,-298 18-22,-534 18-23,-612 24-30,-916 hv 12-17 29x20 14x25 43-39 8-13 39-34 19-24 34-29 21-26 29x20 25x14}
- 43.** 29x20 {diepte 7, 0.0 sec, 29x20,10 hv 29x20 14x25 31-26 12-17 43-39 19-24 39-34 18-22}
 14x25 {diepte 7, 0.0 sec, 14x25,10 hv 14x25 31-26 12-17 43-39 19-24 39-34 18-22}

44. 43-39 {diepte 19, 4.0 sec, 31-26,3 45-40,3 43-39,3 28-22,5 33-29,138 27-22,686 28-23,2764 hv 31-26 12-17 43-39 19-24 39-34 25-30 34x25 24-29 33x24 18-22 27x18}

25-30 {diepte 19, 5.1 sec, **12-17,3 21-26,1** 18-23,-96 **25-30,-126** 19-24,-132 9-14,-168 18-22,-588 19-23,-2620 hv 12-17 31-26 19-24 39-34 25-30 34x25 24-29 33x24 18-22 27x18 13x42}



Wil speelt hier 44. ... 25-30?

Zowel Dragon Dammen als Kingsrow geven 12-17 hier aan als de beste zet.

Kingsrow zou het als volgt spelen:

44. ... 12-17 45. 39-34 18-22 46. 27x18 13x22 47. 31-26 9-14 48. 45-40 19-24 49. 34-29 14-19 50. 29x20 25x14
51. 40-34 14-20 52. 34-29 20-25 53. 29-23 19-24 54. 23-18 22x13 55. 28-23 24-30 56. 33-29 30-35 57. 29-24 35-40
58. 23-19 40-44 59. 19x8 44-49 60. 38-33 49x27 61. 8-2 27-4 62. 33-28 4-22 63. 28-23 22-39 64. 23-19 39-33
65. 19-13 33x20 66. 2-7 21-27 67. 13-8 16-21 68. 8-2 27-32 69. 7-12 17x8 70. 2x15 21-27 71. 15-24 32-37
72. 24-35 27-32 73. 35-19 32-38 74. 19x41 remise

De tegenstander van Wil heeft aangegeven dat hij na 44. ... 12-17 de zet 45. 31-26 zou spelen.

*Volgens Kingsrow zou dan gespeeld kunnen worden: 44. ... 12-17 45. 31-26 19-24 46. 39-34 25-30 47. 34x25 24-29
48. 33x24 18-22 49. 27x18 13x42 50. 25-20 42-48 51. 24-19 48-25 52. 19-13 25x46 53. 13x4 46-41 54. 4-36 41-47
55. 45-40 47-42 56. 36-41 21-27 57. 41-28 42-29 58. 28x6 29x45*

In de diagramstand is ook 44. ... 21-26 nog mogelijk.

44. ... 21-26 45. 45-40 26x37 46. 32x41 19-24 47. 40-34 13-19 48. 41-37 18-23 49. 28-22 9-13 50. 37-32 24-29
51. 33x24 19x30 52. 38-33 30-35 53. 33-28 12-17 54. 28x8 17x37 55. 8-3 37-41 56. 27-21 16x27 57. 34-29 41-47
58. 29-23 27-32 59. 3-26 32-38 60. 23-19 25-30 61. 26-21 35-40 62. 21x24 47x20 remise (61. ... 38-42 kan ook)

45. 28-22 {diepte 21, 5.1 sec, 28-22,-196 31-26,1 39-34,1 33-29,176 45-40,292 28-23,732 27-22,1012 hv 28-22 30-35 31-26 12-17 22x11 16x7 27x16 19-23 33-28 13-19 28-22}

21-26 {diepte 20, 3.6 sec, **12-17,-186** 30-34,-204 9-14,-242 30-35,-258 19-24,-260 18-23,-846 19-23,-2442 **21-26,-2604** hv 12-17 22x11 16x7 27x16 19-24 45-40 7-12 31-26 12-17 40-34 30-35}



Anton heeft de beste zet 45. 28-22 gespeeld. Wil vervolgt met 45. ... 21-26.

Er zijn betere zetten mogelijk maar ze hebben alle hetzelfde resultaat.

Volgens Kingsrow zou het dan als volgt kunnen verlopen:

Na 45. ... 9-14 volgt: 46. 31-26 18-23 47. 26x8 13x2 48. 22-17 19-24

49. 17-12 14-19 50. 45-40 23-29 51. 40-35 29-34 52. 27-22 34x43 53. 38x49 19-23

54. 33-28 23-29 55. 32-27 30-34 56. 49-43 34-40 57. 35x44 24-30 58. 44-40 29-34

59. 40x29 30-35 60. 22-17 35-40 61. 43-39 40-45 62. 27-22 16-21 63. 17x26 45-50

64. 29-23 50x33 65. 28x39

Na 45. ... 30-34 volgt: 46. 39x30 21-26 47. 32-28 26x37 48. 27-21 18x27 49. 21x41 13-18 50. 38-32 12-17 51. 33-29 17-21 52. 41-37 21-27 53. 32x21 16x27 54. 29-24 19-23 55. 28x19 18-22 56. 24-20 22-28 57. 30-25 27-32 58. 37-31 32-38 59. 19-14 28-33 60. 14x3 38-43 61. 45-40 43-48 62. 31-26 48-37 63. 3-21 37-28 64. 40-34 28-37 65. 20-15 37-14 66. 21-43 14-23 67. 43-48 23x40 68. 15-10 40-7 69. 10-5 7-18 70. 26-21 18-1 71. 5-10 1-45 72. 10-15 33-39 73. 48x30 45-40 74. 21-17 40-49 75. 30-34 49-35 76. 34-23 35-49 77. 15-33 49-16 78. 33-20 16-2 79. 20-15 2-16 80. 15-29 16-2 81. 23-28 2-16 82. 17-12 16-2 83. 29-34 2-24 84. 12-7 24-38 85. 28-41 38-24 86. 41-14 24-33 87. 14-32 33-42 88. 7-2 42-15 89. 32-14 15-47 90. 2-19 47-15 91. 34-12 15-4 92. 12-18 4x36 93. 19-13 36x20 94. 25x14 (ook winst Anton)

Na 45. ... 12-17 volgt: 46. 22x11 16x7 47. 27x16 19-24 48. 32-28 13-19 49. 45-40 18-23 50. 38-32 23-29 51. 31-27 29x38 52. 32x43 9-13 53. 39-33 13-18 54. 43-39 30-35 55. 28-22 35x44 56. 22x13 19x8 57. 39x50 8-13 58. 27-21 13-19 59. 21-17 19-23 60. 50-44 24-29 61. 33x24 23-28 62. 17-11 28-32 63. 11x2 32-37 64. 16-11 37-42 65. 2-7 42-48 66. 44-40 48-39 67. 11-6 39-50 68. 6-1 50-6 69. 7-29 6-17 70. 40-35 17-39 71. 1-18 39-25 72. 29-33 25-3 73. 33-17 3x26 74. 18-12 26x30 75. 35x24

46. 22-17 {diepte 19, 3.8 sec, 22-17,-2604 32-28,1 33-28,12 45-40,800 33-29,2456 39-34,2506 27-21,2532 hv 22-17 26x28 17x8 13x2 33x35 2-8 35-30 9-13 38-32 13-18 30-24}

26x28 {diepte 7, 0.0 sec, 26x28,-2448 hv 26x28 17x8 13x2 33x35 2-8 35-30 9-14 30-24}

47. 17x8 {diepte 27, 6.7 sec, 17x8,-3967 33x22,3992 hv 17x8 13x2 33x35 2-7 35-30 7-11 30-24 11-17 24-19 17-21 38-32}

13x2 {diepte 7, 0.0 sec, 13x2,-2450 hv 13x2 33x35 2-7 35-30 7-11 30-24 11-17 24-19}

48. 33x35 {diepte 7, 0.0 sec, 33x35,-2450 hv 33x35 2-7 35-30 7-11 30-24 11-17 24-19}

{diepte 22, 3.6 sec, 2-7,-2704 9-13,-3974 9-14,-3978 2-8,-3978 16-21,-3982 hv 2-7 35-30 7-11 30-24 11-17 38-32 17-21 24-20 21-26 20-15 16-21}